



Report to Napier City Council
Freedom Camping
Bylaw Review 2024

Assessment of Site Options

Report to Napier City Council

Freedom Camping Bylaw Review 2024

Assessment of Site Options



Prepared by: Debra Stewart
Director/Consultant



Rowena Macdonald
Director/Consultant

Date: 7 October 2024
File Ref: NCC24010
Status: Final

This document is the property of Sage Planning HB Limited. Any unauthorized employment or reproduction, in full or in part, is forbidden. This document has been prepared for a specific purpose for the above client and shall not be used for any other unauthorized purpose. Sage Planning HB Limited does not acknowledge any duty of care or responsibility to any other party.

Contents

Executive Summary	1
1 Purpose	2
1.1 Existing Freedom Camping Provision	2
1.2 The Brief	2
2 Assessment Methodology	3
2.1 Assessment Criteria	3
2.2 Site Identification	3
2.3 Site Assessments	4
2.4 Site Assessment Matrix	4
2.5 Review, Finalise & Summarise Results	4
2.6 Scoring Approach	4
2.7 List of Sites Assessed	5
2.8 Knockout Scores (& Why)	6
2.9 Flagged (& Why)	6
2.10 Other Matters	7
3 Assessment Findings	8
4 Conclusion	9

Appendices:

Appendix A – Site Map

Appendix B – Site Assessment Sheet Template

Appendix C – Assessment Summary Matrix

Appendix D – Individual Site Assessment Sheets

Appendix E – NCC Freedom Camping Infringement Statistics

Executive Summary

An assessment of eighteen (18) existing and potential freedom camping sites was completed to support Napier City Council in its Freedom Camping Bylaw Review.

The assessment process involved the development of criteria, supported by attributes, which were then used to score sites, and a summary matrix was then prepared which enabled the sites to be ranked based on their scores and suitability. The safety criteria were considered to be of such importance that, depending on the score, some sites were “knocked out”. In addition, sites were “flagged” where freedom camping would likely displace an existing function/use, which is set out in the criteria related to overall amenity.

The assessment identified the following three (3) sites as the most suitable for freedom camping:

Site 3 – Pump Track / Ellison Street (existing), ranked number 1 with a score of 14.3/15.

Site 4 – National Aquarium Carpark (potential site), ranked number 2 with a score of 12.5/15.

Site 11 – Te Karaka / Perfume Point Carpark (existing), ranked number 3 with a score of 12.2/15.

There were a number of other sites which, with some remedial work e.g. safety (including sites which have been “knocked out”), and improvements to services etc, could be made more suitable. However, the findings in this report have been made on the basis that there is no budget available to undertake improvement work.

1 Purpose

The purpose of this report is to provide an assessment of existing and potential freedom camping sites in Ahuriri|Napier to enable Napier City Council (NCC) to objectively consider and determine the most suitable sites for inclusion in the reviewed Freedom Camping Bylaw.

The review of the Bylaw was initially prompted by the expiration of the Sept 2021 temporary closure of the Westshore Freedom Camping Site, which required reassessment to determine whether it should remain open under the Freedom Camping Act. Additionally, the introduction of the Self-contained Motor Vehicles Legislation Act (2023), which mandates that camping on local authority land is only permitted in self-contained vehicles, required the Council to re-evaluate its stance on freedom camping within its area. As a result, the scope of the review was broadened to include an evaluation of the overall effectiveness and fitness of the bylaw in light of these and other factors.

1.1 Existing Freedom Camping Provision

Napier City Council has a Freedom Camping Bylaw which came into force 1 February 2017 and replaced the Napier Freedom Camping Bylaw 2014 (amended 2015).

The 2017 Bylaw identified four sites for Freedom Camping which had restrictions as detailed below -

1. Pump Track/Ellison Street Carpark (entire site/3-night maximum stay/self-contained)
2. Te Karaka/Perfume Point Carpark (4 vehicles only/2-night maximum stay/self-contained)
3. Westshore Beach Reserve (4 vehicles only/2-night maximum stay/self-contained)
4. Foreshore Reserve Carpark (entire site noting that the site was reduced in size in 2019/2-night maximum stay/non self-contained)

In addition, the Bylaw included several prohibited sites, including an extensive list of public open spaces.

Monitoring of Freedom Camping sites has been ongoing since the adoption of the Bylaw. This has included monitoring and recording user numbers, infringements, and complaints. The data has been collected and collated (refer Appendix E – NCC Freedom Camping Infringement Statistics) and this has been used to inform the site assessments.

The freedom camping site at Westshore (Site 16) was closed in September 2021 after the Council received a significant number of recorded complaints (193 since 2018). Some (20) of the recorded complaints occurred after the closure of the Westshore freedom camping site. A high-level review of the complaints data shows that the vast majority of complaints (estimated 70-75%) were from just two residential addresses, and it appears that many related to other activities and vehicles in the wider Westshore area, not just the formalised freedom camping site.

Complaints in relation to freedom camping sites in other parts of the city were limited to single figures (per site) over the 5-year period (2018 to present).

Fines for breaching the Freedom Camping bylaw increased from \$200 to \$400 in September 2023 as set by the new laws. This resulted in a notable decline in infringements.

1.2 The Brief

NCC commissioned Sage Planning to provide an assessment of existing and potential freedom camping sites in Ahuriri|Napier to support their review of the Freedom Camping Bylaw.

NCC required the development and implementation of an assessment approach that would generate an objective review of current and potential future sites for Council's consideration. The criteria and process needed to be robust enough to enable the Council to confidently propose freedom camping sites under the amended Bylaw.

It should be noted that the brief only related to freedom camping. Homeless/rough sleepers have not been considered as part of this review, as this activity falls outside of the Freedom Camping legislation.

2 Assessment Methodology

2.1 Assessment Criteria

The assessment criteria were developed following a conversation with the NCC policy team, which identified issues and noted the matters raised in preliminary discussions with elected members about the impending bylaw review.

A desk top review of freedom camping bylaws prepared by other local authorities and the new legislation (Self-contained Motor Vehicles Legislation Act 2023) was undertaken to identify issues that were impacting on the success (or otherwise) of freedom camping in other parts of Aotearoa|New Zealand.

The recent outcome of the judicial review in relation to the Queenstown Lakes District Council Freedom Camping Bylaw preparation has been considered when confirming the site assessment criteria and attributes.

User safety was identified as an issue early on and this prompted a review of the Crime Prevention through Environmental Design Guidelines (CPTED) to understand how best to include safety considerations in the assessment criteria.

Five key areas (criteria) were identified for the assessment -

1. Safety (comprising 7 attributes)
2. Services (comprising 6 attributes)
3. Proximity to other activities (comprising 3 attributes)
4. The Site (comprising 3 attributes)
5. Overall Amenity (comprising 2 attributes)

Each of the above areas were fleshed out and attributes identified and described. The assessment criteria were agreed with Council officers. During the assessment process minor adjustments were made to ensure that scoring of the attributes was able to be applied consistently across all sites.

The Site Assessment Sheet Template is attached in **Appendix B**.

2.2 Site Identification

Council officers requested that all potential freedom camping locations across the city were considered as part of this assessment following their workshop with elected members.

Feedback from officers indicated that using inner-city parking lots for freedom camping, where the parking bylaw regulates use during certain hours, would significantly increase the operational and compliance challenges. In addition, managing freedom campers in leased or public carparks at night, posed some challenges. This would require significant resource to ensure freedom campers vacated on time and adhered to appropriate behaviour standards. Amenity of public and leased carparks is an ongoing issue which has led to the closure of certain carparks.

Ahuriri|Napier's coastal margin between Awatoto and Le Quesne Road, Bay View, was ultimately prioritised for detailed site assessment due to the established pattern of provision in this area and the preference for freedom campers to locate in scenic areas.

Several sites on the coastal margin were then eliminated and not assessed any further. Reasons for elimination included being too small and multi-use, for example, the Bay Skate carpark and the May and Peter Harris playground carpark on Marine Parade.

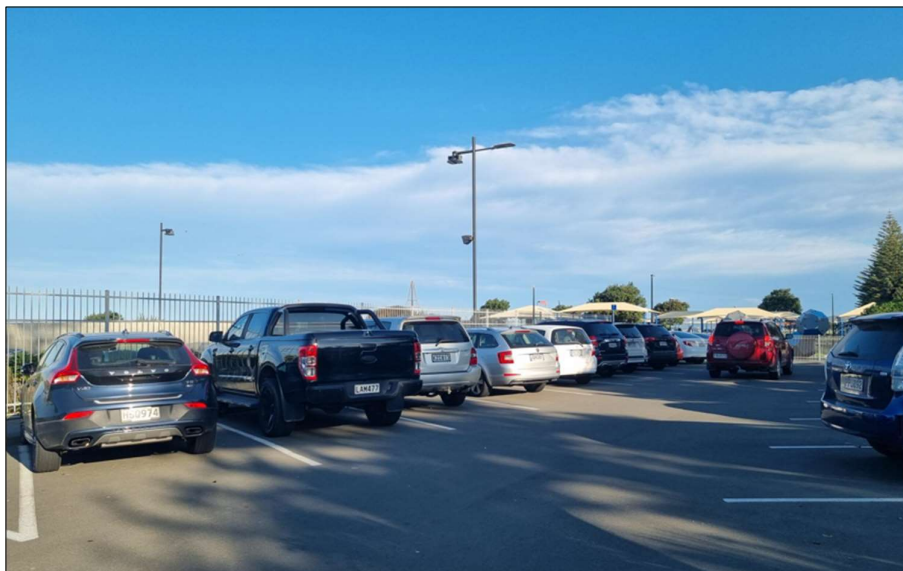


Photo 1 – Bay Skate carpark - eliminated due to size constraints and given the multi-use nature of the location

The other reason sites were eliminated from the assessment process included Department of Conservation constraints i.e. where there were ecological values which could be compromised by the introduction of freedom camping. This was the case for sites at Awatoto (Department of Conservation Land), and for Humber Street (where it adjoins the Ahuriri Estuary).

A total of eighteen (18) sites were assessed (attached in **Appendix A**).

2.3 Site Assessments

Each of the sites was visited in August 2024 and photographs were taken. Where necessary Google Maps were used to identify specific matters not identified when on-site or which required clarification e.g., lighting, signage, CCTV coverage etc. An assessment of each site was completed using the Assessment Sheet Template (attached in **Appendix B**).

Once individual sites had been assessed, a review was undertaken across all sites to ensure consistency. This resulted in some minor adjustments to descriptions for some attributes on the site assessment sheets to ensure that it was clear what was being assessed and how it was being scored, and to ensure consistency.

2.4 Site Assessment Matrix

To enable a comparative analysis, information from all sites was collated and presented as a draft Assessment Summary Matrix. This enabled the sites to be ranked according to their total score.

2.5 Review, Finalise & Summarise Results

The *draft* of the Assessment Summary Matrix was reviewed with NCC Officers, resulting in some further refinements. Following this, the Individual Site Assessment Sheets and Assessment Summary Matrix were finalised. The final Individual Site Assessment Sheets are included in **Appendix D** and Assessment Summary Matrix in **Appendix C**.

2.6 Scoring Approach

Each of the five (5) key areas/criteria on the Site Assessment Sheet comprises a number of attributes that contributed to the particular criteria. Each attribute was assigned a score of between 0 and 3, and these were averaged to provide a score for each key area/criteria of between 0 and 3 (with 3 being the highest). Therefore, the maximum score for each site was 15.

Where the site being assessed was an existing Freedom Camping site, 'Criteria 4 – The Site' was averaged across 3 attributes (so that complaints/compliance history could be included). Where the site

was not an existing site, this criterion was averaged across the 2 remaining attributes (enabling complaints/compliance history to be excluded).

The table below describes the scoring system – specifically in applying the ‘affected by nearby industrial/business activities’ and ‘level of infringements for existing sites’ attributes.

Table 1 – Scoring system

Criteria/Criterion	Scoring Descriptor (0-3):			
General	0 = does not meet	1 = partly meets	2 = mostly meets	3 = fully meets
3. Proximity to other activities Site is not affected by nearby industrial/business activities	0 = significant impact	1 = moderate impact	2 = minimal impact	3 = no impact
4. The Site Site has a low level of infringements for freedom campers (No. infringements as percentage of No. freedom campers)	0 = 6% or greater	1 = 4% to 5.9%	2 = 2% to 3.9%	3 = less than 2%

2.7 List of Sites Assessed

A total of eighteen (18) sites were assessed (refer Site Map attached in **Appendix A**), being:

- Site 1 – Foreshore Reserve South
- Site 2 – Foreshore Reserve – existing
- Site 3 – Pump Track / Ellison St – existing
- Site 4 – National Aquarium Carpark
- Site 5 – Reef Garden Carpark
- Site 6 – Ocean Spa Carpark
- Site 7 – Coote Road Carpark 1
- Site 8 – Coote Road Carpark 2
- Site 9 – Centennial Gardens Carpark
- Site 10 – Hot Chick Carpark
- Site 11 – Te Karaka / Perfume Pt Carpark – existing
- Site 12 – Whakarire / Rangatira Revetment Carpark
- Site 13 – Westshore Beach Reserve
- Site 14 – Westshore Reserve – Surf Club
- Site 15 – Westshore Reserve – Playground
- Site 16 – Westshore Reserve – existing (temporarily closed)
- Site 17 – Le Quesne Road 1
- Site 18 – Le Quesne Road 2

One or two additional sites were initially assessed and then discounted for the reasons set out in section 2.2.

2.8 Knockout Scores (& Why)

As part of the final consideration of the sites that were assessed, some were ultimately “knocked out” based on the safety criteria score, as follows:

Criteria 1 – Safety

Safety is considered the most important measure of a site’s suitability. If a site is deemed unsafe, then freedom camping is not an appropriate activity in that location. For this assessment, a site has been deemed less than safe if the overall score for the safety criteria drops below the midpoint of 1.5, and it has then been “knocked out” on that basis. Note: This assumes costs to remediate the safety issues would be prohibitive.

There are several sites where this is the case, and these are listed below. The detail related to the safety assessment is set out in the respective site assessment sheets.

- Site 1 – Foreshore Reserve South
- Site 2 – Foreshore Reserve – existing
- Site 9 – Centennial Gardens Carpark
- Site 12 – Whakarire / Rangatira Revetment Carpark
- Site 13 – Westshore Beach Reserve
- Site 14 – Westshore Reserve – Surf Club
- Site 15 – Westshore Reserve – Playground
- Site 17 – Le Quesne Road 1
- Site 18 – Le Quesne Road 2

2.9 Flagged (& Why)

As part of the final consideration of the sites that were assessed, some were “flagged” because the freedom camping would likely displace existing activities on the site, as follows:

Criteria 5 – Overall Amenity

Attribute 2 – Existing function/uses can accommodate freedom camping without compromise

If a site already supports significant existing activity that would be displaced by the introduction of freedom camping, then this is also considered a significant measure of a site’s suitability. Examples of this could be where the site supports an existing high use recreation activity, where it is integral to supporting central city parking, or where it accommodates a regular event such as a weekly community market (such as the Sunday Markets in the Coote Road carparks).

For this assessment, a site has been deemed to displace significant existing activity if it has a score of 0 for this attribute, and has been “flagged” on that basis. If freedom camping is to be considered for these sites, there would need to be further consideration of how multiple uses could be accommodated on the site. For example – only permitting self-contained vehicles to overnight and requiring them to be moved by an agreed time or to start paying daytime parking carparking charges.

The following sites were “flagged” for this reason.

- Site 5 – Reef Garden Carpark
- Site 6 – Ocean Spa Carpark
- Site 7 – Coote Road Carpark 1
- Site 8 – Coote Road Carpark 2
- Site 10 – Hot Chick Carpark

2.10 Other Matters

In addition to dedicated freedom camping sites, clause 5.1 of the Freedom Camping Bylaw 2017 permits freedom camping in the Napier local authority area (other than those areas identified in Schedule One (restricted areas for self-contained vehicles), Schedule Two (restricted area for non self-contained vehicles, and Schedule Three (prohibited areas)), subject to the following restrictions;

- a) Vehicles must be certified self-contained;
- b) Period of stay shall be no longer than one consecutive night in any one location in the Napier local authority area:
- c) Freedom campers must comply with conditions listed in 6.1.

Note: clause 6.1 of the bylaw lists the general conditions for freedom camping in vehicles that people are required to comply with.

The brief specifically excluded provision for freedom camping across the local authority area under this clause of the bylaw from this assessment process, and therefore has not been considered further.

3 Assessment Findings

Summary of rankings – refer **Appendix B & C** for full assessment results and commentary.

Ranking (1-18)	Site Reference	Overall Score	Notes
1	Site 3 – Pump Track Ellison Street – existing	14.3	-
2	Site 4 – National Aquarium Carpark	12.5	-
3	Site 11 - Te Karaka Perfume Point Carpark – existing	12.2	-
4	Site 10 – Hot Chick Carpark	11.7	Flagged: - Function/Use Site score of 0
5	Site 5 – Reef Garden Carpark	11.4	Flagged: - Function/Use Site score of 0
6	Site 6 – Ocean Spa Carpark	10.6	Flagged: - Function/Use Site score of 0
7	Site 2 – Foreshore Reserve – existing	10.0	Knocked out: - Overall Safety score of 1.3
8	Site 7 – Coote Road Carpark 1	9.4	Flagged: - Function/Use Site score of 0
9	Site 8 – Coote Road Carpark 2	9.2	Flagged: - Function/Use Site score of 0
10	Site 15 – Westshore Reserve – Playground	8.8	Knocked out: - Overall Safety score of 1.1
11	Site 16 – Westshore Reserve – existing (temporarily closed)	8.7	-
12	Site 18 – Le Quesne Road 2	8.5	Knocked out: - Overall Safety score of 1.3
13	Site 9 – Centennial Gardens Carpark	8.3	Knocked out: - Overall Safety score of 1.3
14	Site 14 – Westshore Reserve – Surf Club	8.0	Knocked out: - Overall Safety score of 0.9
15	Site 17 – Le Quesne Road 1	6.7	Knocked out: - Overall Safety score of 0.7
16	Site 1 – Foreshore Reserve South	6.5	Knocked out: - Overall Safety score of 0.9
17=	Site 13 – Westshore Beach Reserve	6.2	Knocked out: - Overall Safety score of 0.9
17=	Site 12 – Whakarire/Rangatira Revetment Carpark	6.2	Knocked out: - Overall Safety score of 0.6

4 Conclusion

Of the eighteen (18) sites assessed as suitable for freedom camping, there were four (4) sites that were deemed the most suitable once the “knock out” criteria and “flags” were applied.

The top three (3) ranked sites identified as being most suitable for freedom camping as part of this assessment (two existing and one potential), are:

1. **Site 3** – Pump Track / Ellison Street (existing), ranked number 1 with an overall score of 14.3.
2. **Site 4** – National Aquarium Carpark (potential), ranked number 2 with an overall score of 12.5.
3. **Site 11** – Te Karaka / Perfume Point Carpark (existing), ranked number 3 with an overall score of 12.2.

The existing Pump Track / Ellison Street site appears to work well and has few infringements which suggests general public acceptance. It is well laid out with a high level of amenity. It makes sense to retain this site for freedom camping.

The Te Karaka / Perfume Point site appears to work well, is well laid out with a high level of amenity, and infringements have dropped since the increased fines were introduced. As for the Pump Track site, this site is considered worth retaining.

The National Aquarium Carpark site is deemed suitable with minimal investment required, and already has a high level of amenity and is well laid out and serviced to accept freedom camping. However, prior to progressing this site further, further investigation would be required.

There were several other sites which, with some remedial work, could improve their score and subsequent ranking. However, the findings in this report have been made on the basis that there is insufficient budget available to undertake improvement work.

The existing sites at Westshore Reserve (temporarily closed) and on the Foreshore Reserve have been identified as having limitations which are considered to impact on their suitability for freedom camping, as follows:

1. **Site 16** – Westshore Reserve (existing – temporarily closed) was the only other site that was not “knocked out” or “flagged”, however it is ranked 11th and has a comparatively low overall score of 8.7.
2. **Site 2** – Foreshore Reserve (existing) ranked 7th with an overall score of 10.0, however was “knocked out” because of safety, with an average score of 1.3 for that criterion.

The temporarily closed Westshore Reserve site score and ranking could be improved through the provision of a greater level of on-site amenities such as a water supply, installing some low-level lighting, installing additional rubbish bins, and making other improvements to enhance the amenity of the site, while noting the concerns expressed by residents.

It is considered that the existing Foreshore Reserve site should only be considered for retention (for self-contained freedom camping) if there are significant safety improvements made to it, such as the addition of CCTV and better lighting, and installation of further features to improve site amenity.

If freedom camping is to be considered for those sites that have been “flagged” (Sites 5, 6, 7, 8 & 10), there would need to be further consideration of how that could be accommodated on the site alongside their existing function/uses, as outlined in section 2.9 of this report.

Detail in relation to the scores, rankings, “knockouts”, and “flags” is presented in the Assessment Summary Matrix included in **Appendix C**.

Appendix A – Site Map



Legend

Freedom Camping Site Assessment

Site Number, Site Name

- 1, Foreshore Reserve South
- 2, Foreshore Reserve (existing)
- 3, Pump Track/Ellison St (Existing)
- 4, National Aquarium Carpark
- 5, Reef Garden Carpark
- 6, Ocean Spa Carpark
- 7, Coote Rd Carpark 1
- 8, Coote Rd Carpark 2
- 9, Centennial Gardens Carpark
- 10, Hot Chick Carpark
- 11, Perfume Pt (Existing)
- 12, Rangatira Reventment
- 13, Westshore Beach Reserve
- 14, Westshore Beach Reserve - Surf Club
- 15, Westshore Reserve - Playground
- 16, Westshore Reserve (Temp Closed)
- 17, Le Quesne Rd 1
- 18, Le Quesne Rd 2



Eagle Technology, Land Information New Zealand, GEBCO, Community maps contributors

Appendix B – Site Assessment Sheet Template

Site: _____

Date: _____

Assessment Criteria			Score:	Notes:
1	Safety	Access: safe movement and connections		<i>well-defined routes, spaces & entrances for convenient & safe movement without compromising security</i>
		Surveillance & sightlines: see and be seen		<i>site is overlooked, clear sightlines, good lighting</i>
		Layout: clear and logical orientation		<i>site is laid out to discourage anti-social behaviour, has a perception of safety, good way-finding</i>
		Activity mix: eyes on the street		<i>level of human activity appropriate to the location and a sense of safety - a compatible mix of uses</i>
		Sense of ownership: showing the space is cared for		<i>site promotes a sense of ownership, respect, responsibility and community</i>
		Quality environments: well-designed, managed, and maintained		<i>site is designed with management and maintenance in mind, promote community safety</i>
		Physical protection: using active security measures		<i>well-designed security features and elements, CCTV installed</i>
				Sub-Total:
2	Services	Water supply		<i>connected to a potable water supply on-site</i>
		Lighting		<i>appropriate lighting is installed for freedom campers at night</i>
		Dump stations		<i>dump station installed on-site</i>
		Toilets		<i>public toilets on-site (or located within 100m)</i>
		Rubbish bins		<i>public rubbish bins provided on-site (or located within 100m)</i>
		Access for large vehicles		<i>site size, shape and layout accomodates ease of access, parking and manoeuvring for large vehicles to enter and exit the site in a forward direction</i>
				Sub-Total:
3	Proximity to Other Activities	Site is not affected by nearby industrial/business activities		<i>nearby activities will not adversely affect the suitability of the site for freedom camping purposes i.e. unreasonable noise, odour, light spill, dust etc</i>
		Site has good physical context		<i>site has good connection to main roads, adjacent to open spaces etc</i>
		Proximity to other services		<i>site is within walking/cycling distance of supermarkets, recreational activities (e.g. bike trails/Rotary pathway etc), entertainment precincts</i>
				Sub-Total:
4	The Site	Exhibits site features that enhance the freedom-camping experience - trees/shade/bollards/signage/surface/marking		<i>the site includes features & improvements that directly enhance the freedom camping experience in that location</i>
		Site is not vulnerable to natural hazards		<i>the site is not subject to risk from coastal erosion or inundation, periodically or over time, or from flooding events</i>
		Site has low level of infringements for freedom camping non-compliances (existing sites only)		<i>few complaints (noise, disorder, litter, public health etc) and few issues with compliance with the freedom camping bylaw & other rules</i>
				Sub-Total:
5	Overall Amenity	Is a suitable location for freedom camping		<i>site has good views and access to public open space e.g. of the beach/ocean, and has easy walking/cycling access to attractions</i>
		Existing function/uses can accommodate freedom camping without compromise		<i>the introduction of freedom camping would not displace existing users of the site e.g. paid parking or time-restricted carparks, or regular community activities such as a weekly market</i>
				Sub-Total:
TOTAL SCORE (out of a total possible 15):			0.0	

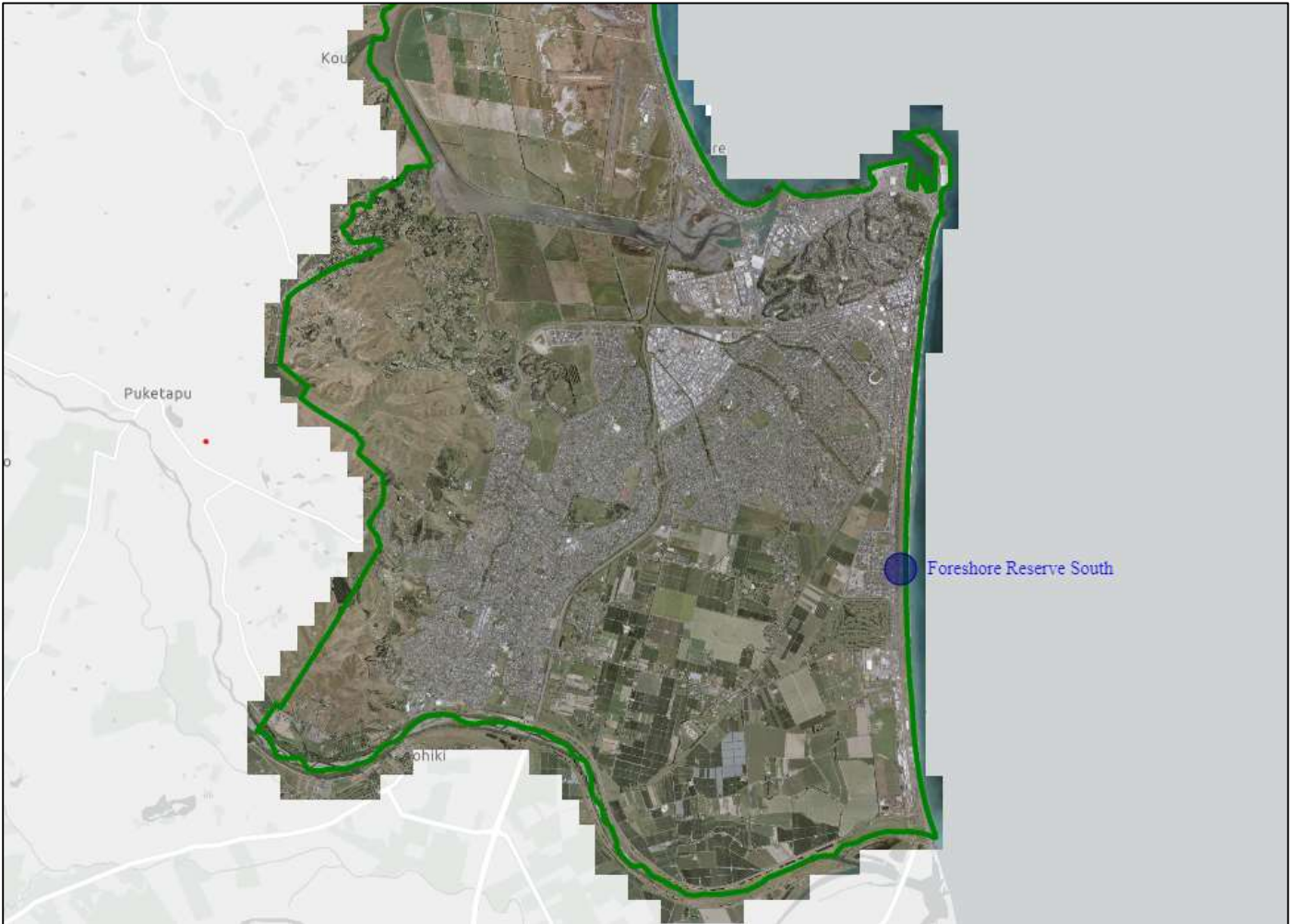
Appendix C – Assessment Summary Matrix

Site			Site 1 - Foreshore Reserve South	Site 2 - Foreshore Reserve (existing)	Site 3 - Pump Track /Ellison St (existing)	Site 4 - National Aquarium Carpark	Site 5 - Reef Garden Carpark	Site 6 - Ocean Spa Carpark	Site 7 - Coote Road Carpark 1	Site 8 - Coote Road Carpark 2	Site 9 - Centennial Gardens Carpark	Site 10 - Hot Chick Carpark	Site 11 - Te Karaka/ Perfume Pt (existing)	Site 12 - Whakarire/ Rangatira Revetment	Site 13 - Westshore Beach Reserve	Site 14 - Westshore Reserve - Surf Club	Site 15 - Westshore Reserve - Playground	Site 16 - Westshore Reserve (temp closed)	Site 17 - Le Quesne Road 1	Site 18 - Le Quesne Road 2		
1	Safety	Access: safe movement and connections	3	3	3	3	2	2	2	3	1	2	3	1	2	2	3	3	3	3		
		Surveillance & sightlines: see and be seen	1	1	3	3	2	1	1	1	1	3	3	1	2	2	2	2	2	0	3	
		Layout: clear and logical orientation	1	2	3	3	3	3	3	2	2	2	3	3	1	1	1	1	3	1	1	
		Activity mix: eyes on the street	1	1	3	3	3	3	2	2	1	1	3	1	1	1	1	2	1	1	1	
		Sense of ownership: showing the space is cared for	0	1	3	3	3	3	3	2	2	2	3	3	0	0	0	0	1	0	1	
		Quality environments: well-designed, managed, and maintained	0	1	3	3	3	3	3	2	2	2	3	3	0	0	0	0	0	3	0	0
		Physical protection: using active security measures	0	0	3	3	3	2	3	0	0	0	3	3	0	0	0	0	0	0	0	0
		Sub-Total:	0.9	1.3	3.0	3.0	2.6	2.4	1.6	1.6	1.3	2.9	2.7	0.6	0.9	0.9	1.1	1.9	0.7	1.3		
2	Services	Water supply	0	3	3	3	1	2	3	2	1	3	3	0	0	3	3	0	0	3		
		Lighting	0	1	3	3	3	3	3	0	0	0	3	3	0	0	0	0	0	0	1	
		Dump stations	2	2	3	2	2	2	2	2	2	2	2	2	2	2	2	2	2	2	1	1
		Toilets	0	3	3	1	2	3	3	3	2	1	3	3	0	1	3	3	3	3	0	3
		Rubbish bins	1	3	3	2	2	2	2	2	2	2	2	2	1	1	2	2	2	1	1	1
		Access for large vehicles	3	3	3	3	1	1	2	3	1	3	3	3	1	1	2	2	3	3	3	3
		Sub-Total:	1.0	2.5	3.0	2.3	1.8	2.2	2.0	1.8	1.2	2.7	2.7	0.7	0.8	2.0	2.0	1.5	0.8	2.0		
3	Proximity to Other Activities	Site is not affected by nearby industrial/business activities	1	3	3	2	3	3	1	1	2	3	3	3	3	2	2	3	3	3		
		Site has good physical context	3	3	3	3	3	3	3	3	3	2	2	2	2	2	2	2	2	2	2	
		Proximity to other services	1	2	2	3	3	3	3	3	3	3	3	3	1	1	1	1	1	0	0	
		Sub-Total:	1.7	2.7	2.7	2.7	3.0	3.0	2.3	2.3	2.3	2.7	2.7	2.0	2.0	1.7	1.7	2.0	1.7	1.7		
4	The Site	Exhibits site features that enhance the freedom-camping experience - trees/shade/bollards/signage/surface/markings	0	0	3	3	3	1	2	2	1	2	2	0	0	2	2	1	1	1		
		Site is not vulnerable to natural hazards	2	2	2	2	2	2	2	2	2	2	2	2	2	2	2	2	2	1	1	
		Site has low level of infringements for freedom camping non-compliances (existing sites only)	-	1	3	-	-	-	-	-	-	-	-	1	-	-	-	-	1	-	-	
Sub-Total:	1.0	1.0	2.7	2.5	2.5	1.5	2.0	2.0	1.5	2.0	1.7	1.0	1.0	2.0	2.0	1.3	1.0	1.0				
5	Overall Amenity	Is this a suitable location for freedom camping	2	3	3	3	3	3	3	3	2	3	3	2	1	1	2	2	2	2		
		Existing function/uses can accommodate freedom camping without compromise	2	2	3	1	0	0	0	0	2	0	2	2	2	2	2	2	2	3	3	
		Sub-Total:	2.0	2.5	3.0	2.0	1.5	1.5	1.5	1.5	2.0	1.5	2.5	2.0	1.5	1.5	2.0	2.0	2.5	2.5		
TOTAL SCORE (out of a maximum 15):			6.5	10.0	14.3	12.5	11.4	10.6	9.4	9.2	8.3	11.7	12.2	6.2	6.2	8.0	8.8	8.7	6.7	8.5		
OVERALL RANKING (1-18):			16	7	1	2	5	6	8	9	13	4	3	17=	17=	14	10	11	15	12		

Appendix D – Individual Site Assessment Sheets

Site 1: Foreshore Reserve South

Site Location:



Site Photographs:

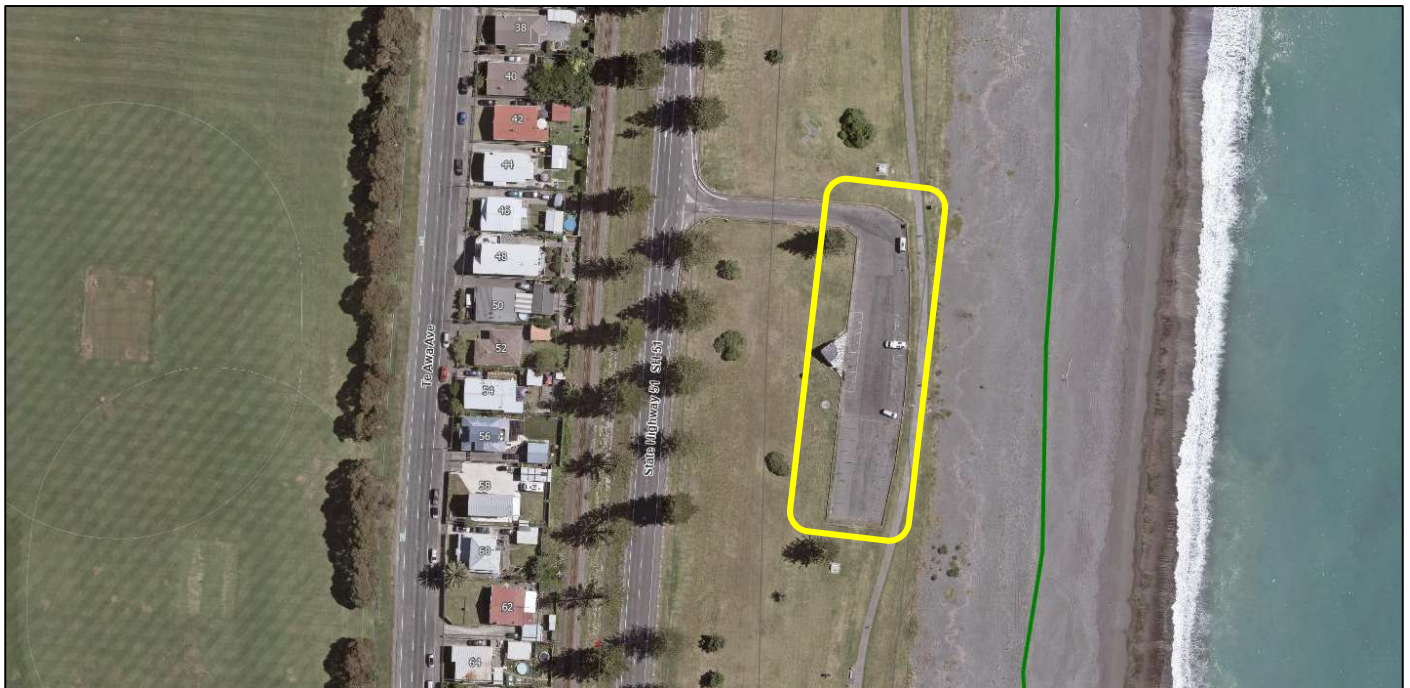


Site Assessment Sheet:

Site 1:	Foreshore Reserve South		Date:	12 August 2024
Capacity:	Nil			
Assessment Criteria			Score:	Notes:
1	Safety	Access: safe movement and connections	3	access is 'left-in, left-out' only off SH51, safe internal circulation (large site area)
		Surveillance & sightlines: see and be seen	1	minimal passive surveillance (residential properties at lower contour and separated by railway line and SH)
		Layout: clear and logical orientation	1	unmarked gravel carpark
		Activity mix: eyes on the street	1	limited other activity in the vicinity - eyes on the street are almost exclusively from passing vehicles on SH, and some recreational users at this southern end of Marine Parade reserve
		Sense of ownership: showing the space is cared for	0	carpark area is unmarked and unkempt
		Quality environments: well-designed, managed, and maintained	0	not designed for freedom camping purposes
		Physical protection: using active security measures	0	no CCTV or other security features/elements
		Sub-Total:		0.9
2	Services	Water supply	0	no water supply
		Lighting	0	no lighting
		Dump stations	2	no dump station - closest dump station is nearby at Pump Track/Ellison Street (existing freedom camping site)
		Toilets	0	no public toilets (1.5km to nearest)
		Rubbish bins	1	standard reserve rubbish bin on-site
		Access for large vehicles	3	easy access, parking and manoeuvring for large vehicles to enter and exit the site in a forward direction (manoeuvring could be reduced if carpark is full)
Sub-Total:		1.0		
3	Proximity to Other Activities	Site is not affected by nearby industrial/business activities	1	Awatoto industrial area nearby
		Site has good physical context	3	site has good connection to SH51 and direct access to the beach
		Proximity to other services	1	site is on outskirts of town, directly adjacent to Rotary pathway - not within walking distance of supermarkets etc
Sub-Total:		1.7		
4	The Site	Exhibits site features that enhance the freedom-camping experience - trees/shade/bollards/signage/surface/markings	0	no features, and generally low on-site amenity
		Site is not vulnerable to natural hazards	2	adjacent to the coast, not currently at risk from coastal processes or flooding, lies within the 'Sea Spray Zone' on NCC GIS Hazards
		Site has low level of infringements for freedom camping non-compliances (existing sites only)	-	N/A
Sub-Total:		1.0		
5	Overall Amenity	Is a suitable location for freedom camping	2	site has good views and access to the beach
		Existing function/uses can accommodate freedom camping without compromise	2	also serves as Marine Parade reserve carparking, but no other activities on-site
Sub-Total:		2.0		
TOTAL SCORE (out of a total possible 15):			6.5	

Site 2: Foreshore Reserve (existing)

Site Location:



Site Photographs:



Site Assessment Sheet:

Site 2: Foreshore Reserve (existing)		Date:	12 August 2024	
Capacity: 8 x marked freedom camping parks (potential for more)				
Assessment Criteria		Score:	Notes:	
1	Safety	Access: safe movement and connections	3	access is 'left-in, left-out' only off SH51, safe internal circulation (large site area)
		Surveillance & sightlines: see and be seen	1	minimal passive surveillance (residential properties at lower contour and separated by railway line and SH, and some screening due to planting & existing toilet block positioning)
		Layout: clear and logical orientation	2	standard carpark layout, logical orientation
		Activity mix: eyes on the street	1	limited other activity in the vicinity - eyes on the street are almost exclusively from passing vehicles on SH, and some recreational users at this southern end of Marine Parade reserve
		Sense of ownership: showing the space is cared for	1	site is showing signs of neglect, signage has been vandalised
		Quality environments: well-designed, managed, and maintained	1	site does not feel as though it has been designed with management and maintenance in mind, noting partial closure of carpark at southern end
		Physical protection: using active security measures	0	no CCTV or other security features/elements
	Sub-Total:	1.3		
2	Services	Water supply	3	water supply available from public toilet on-site
		Lighting	1	lighting associated with public toilet on-site
		Dump stations	2	no dump station - closest dump station is nearby at Pump Track/Elison Street (existing freedom camping site)
		Toilets	3	public toilets on-site
		Rubbish bins	3	public use wheelie bins provided on-site
		Access for large vehicles	3	easy access, parking and manoeuvring for large vehicles to enter and exit the site in a forward direction (manoeuvring could be reduced if carpark is full)
	Sub-Total:	2.5		
3	Proximity to Other Activities	Site is not affected by nearby industrial/business activities	3	no industrial/business activities in the vicinity
		Site has good physical context	3	site has good connection to SH51 and direct access to the beach
		Proximity to other services	2	site is on outskirts of town, within cycling distance of supermarkets, directly adjacent to Rotary pathway
	Sub-Total:	2.7		
4	The Site	Exhibits site features that enhance the freedom-camping experience - trees/shade/bollards/signage/surface/markings	0	no features, vandalised signage, and generally low on-site amenity for users
		Site is not vulnerable to natural hazards	2	adjacent to the coast, not currently at risk from coastal processes or flooding, lies within the 'Sea Spray Zone' on NCC GIS Hazards
		Site has low level of infringements for freedom camping non-compliances (existing sites only)	1	proportionally high number of infringements for the number of users (% of infringements to users across 2018-2024 = 4.8%)
	Sub-Total:	1.0		
5	Overall Amenity	Is a suitable location for freedom camping	3	site has good views and access to the beach/ocean, and has easy walking/cycling access to attractions e.g. Ocean Spa, National Aquarium, MTG, I-Site, retail and restaurants etc
		Existing function/uses can accommodate freedom camping without compromise	2	also serves as Marine Parade reserve carparking, but no other activities on-site
	Sub-Total:	2.5		
TOTAL SCORE (out of a total possible 15):		10.0		

Site 3: Pump Track / Ellison Street (existing)

Site Location:



Site Photographs:



Site Assessment Sheet:

Site 3:	Pump Track/Ellison Street (existing)		Date:	12 August 2024
Capacity:	45 x marked parks (Freedom camping and cars)			
Assessment Criteria			Score:	Notes:
1	Safety	Access: safe movement and connections	3	access is 'left-in, left-out' only off SH51, safe internal circulation (large site area)
		Surveillance & sightlines: see and be seen	3	good passive surveillance from residential properties on Marine Parade
		Layout: clear and logical orientation	3	specifically laid out for freedom camping
		Activity mix: eyes on the street	3	significant recreation hub - adjacent to pump track and Marine Parade attractions, and visible from Marine Parade and busy Ellison St intersection
		Sense of ownership: showing the space is cared for	3	site is well-maintained, clear signs, surfaces and gardens for way-finding
		Quality environments: well-designed, managed, and maintained	3	site has been designed with management and maintenance in mind
		Physical protection: using active security measures	3	CCTV installed
		Sub-Total:		3.0
2	Services	Water supply	3	water supply available from public toilet and tap on-site
		Lighting	3	lighting associated with public toilet and carpark lighting on-site
		Dump stations	3	dump station installed on-site
		Toilets	3	public toilets on-site
		Rubbish bins	3	public use wheelie bins provided on-site
		Access for large vehicles	3	easy access, parking and manoeuvring for large vehicles to enter and exit the site in a forward direction
		Sub-Total:		3.0
3	Proximity to Other Activities	Site is not affected by nearby industrial/business activities	3	no industrial/business activities in the vicinity
		Site has good physical context	3	site has good connection to Marine Parade/SH51 and direct access to the beach
		Proximity to other services	2	site is on outskirts of town, within cycling distance of supermarkets, directly adjacent to Rotary pathway
Sub-Total:		2.7		
4	The Site	Exhibits site features that enhance the freedom-camping experience - trees/shade/bollards/signage/surface/markings	3	picnic tables and shade sails at pump track, gardens, and clear marking of parks, no obvious signs of vandalism
		Site is not vulnerable to natural hazards	2	adjacent to the coast, not currently at risk from coastal processes or flooding, lies within the 'Sea Spray Zone' on NCC GIS Hazards
		Site has low level of infringements for freedom camping non-compliances (existing sites only)	3	proportionally low number of infringements for the number of users (% of infringements to users across 2018-2024 = 1.5%)
		Sub-Total:		2.7
5	Overall Amenity	Is a suitable location for freedom camping	3	site has good views and access to the beach/ocean, and has easy walking/cycling access to attractions e.g. Ocean Spa, National Aquarium, MTC, I-Site, retail and restaurants etc
		Existing function/uses can accommodate freedom camping without compromise	3	also serves as additional Marine Parade reserve carparking, and parking for the pump track
		Sub-Total:		3.0
TOTAL SCORE (out of a total possible 15):			14.3	

Site 4: National Aquarium Carpark

Site Location:



Site Photographs:

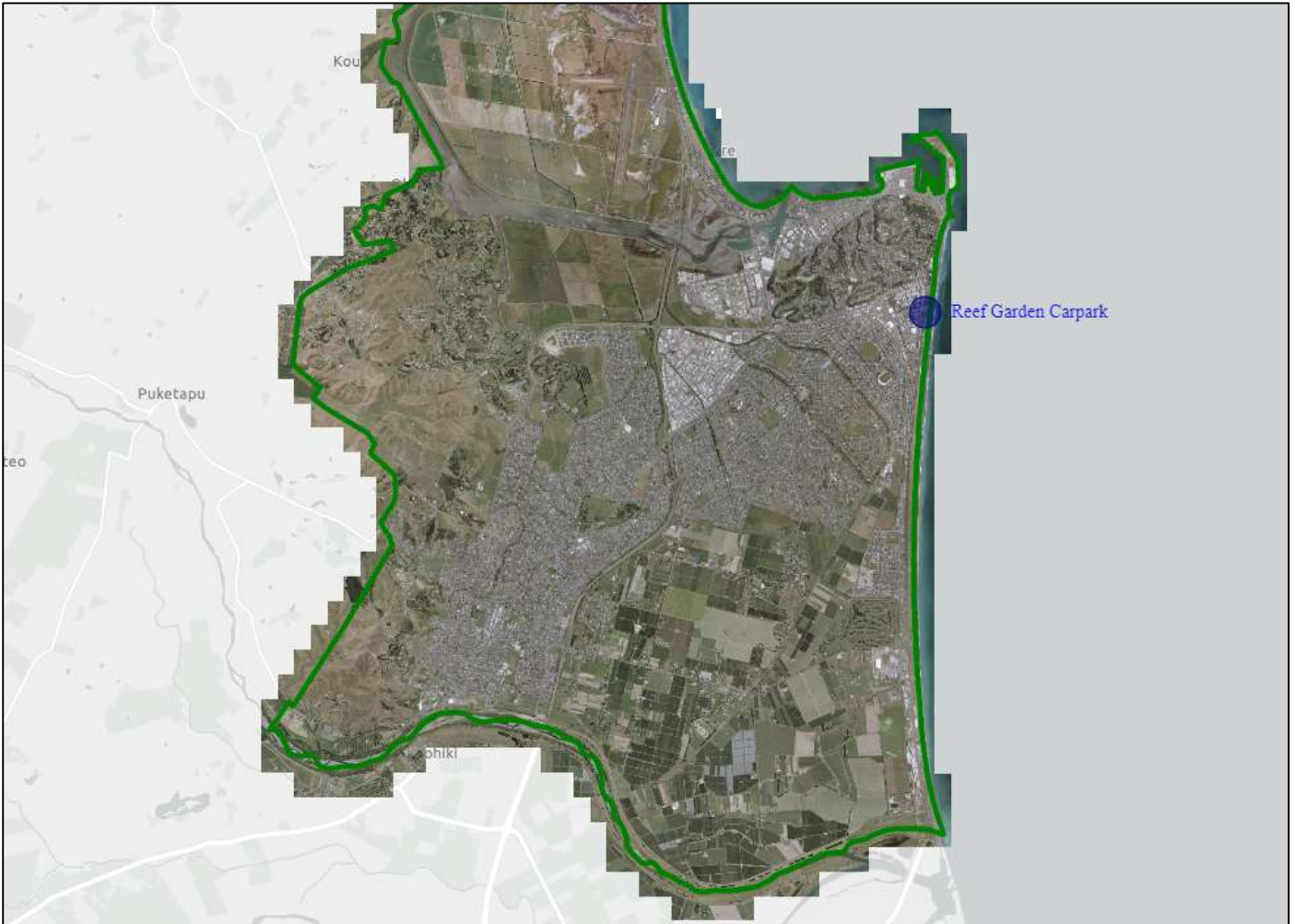


Site Assessment Sheet:

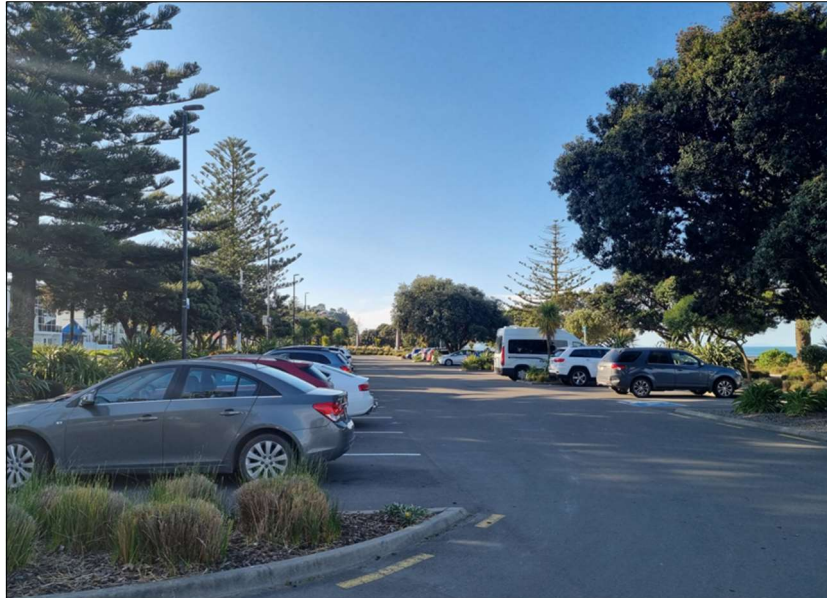
Site 4:	National Aquarium Carpark		Date:	19 August 2024
Capacity:	67 x marked carparks			
Assessment Criteria			Score:	Notes:
1	Safety	Access: safe movement and connections	3	access is 'left-in, left-out' only off Marine Parade, multiple entry points, safe internal circulation (large site area)
		Surveillance & sightlines: see and be seen	3	good passive surveillance from residential properties on Marine Parade, and with National Aquarium activity, and from the Rotary pathway
		Layout: clear and logical orientation	3	clear marked carpark with good directional markings
		Activity mix: eyes on the street	3	significant recreation hub - adjacent to National Aquarium and Marine Parade attractions
		Sense of ownership: showing the space is cared for	3	site is well-maintained, clear signs, surfaces and gardens for way-finding
		Quality environments: well-designed, managed, and maintained	3	site has been designed with management and maintenance in mind
		Physical protection: using active security measures	3	CCTV installed, Marine Parade street lighting, carpark and garden lighting
		Sub-Total:		3.0
2	Services	Water supply	3	dechlorinated water supply available on-site
		Lighting	3	carpark lighting on-site
		Dump stations	2	no dump station - closest dump station is nearby at Pump Track/Ellison Street (existing freedom camping site)
		Toilets	1	nearest public toilets some distance away, by the Marine Parade playground (500m to the north)
		Rubbish bins	2	some public reserve rubbish bins in the vicinity
		Access for large vehicles	3	easy access, parking and manoeuvring for large vehicles to enter and exit the site in a forward direction
Sub-Total:		2.3		
3	Proximity to Other Activities	Site is not affected by nearby industrial/business activities	2	National Aquarium operates 7 days a week, and some operational activity outside normal working hours
		Site has good physical context	3	site has good connection to Marine Parade/SH51 and direct access to the beach
		Proximity to other services	3	site is central to town amenities, BBQs, picnic tables and shade sails in nearby reserve, within walking & cycling distance of supermarkets, directly adjacent to Rotary pathway
Sub-Total:		2.7		
4	The Site	Exhibits site features that enhance the freedom-camping experience - trees/shade/bollards/signage/surface/markings	3	water features, street art, clear marking of parks, no obvious signs of vandalism
		Site is not vulnerable to natural hazards	2	adjacent to the coast, not currently at risk from coastal processes or flooding, lies within the 'Sea Spray Zone' on NCC GIS Hazards
		Site has low level of infringements for freedom camping non-compliances (existing sites only)	-	N/A
Sub-Total:		2.5		
5	Overall Amenity	Is a suitable location for freedom camping	3	site has good views and access to the beach/ocean, and has easy walking/cycling access to attractions e.g. Ocean Spa, National Aquarium, MTC, I-Site, retail and restaurants etc
		Existing function/uses can accommodate freedom camping without compromise	1	also serves as additional Marine Parade reserve carparking, and parking for the National Aquarium (Note: 67 carparks, so plenty of capacity)
Sub-Total:		2.0		
TOTAL SCORE (out of a total possible 15):			12.5	

Site 5: Reef Garden Carpark

Site Location:



Site Photographs:



Site Assessment Sheet:

Site 5: Reef Garden Carpark		Date: 19 August 2024		
Capacity: 51 x marked carparks				
Assessment Criteria		Score:	Notes:	
1	Safety	Access: safe movement and connections	2	access is 'left-in, left-out' only off Marine Parade, tight internal circulation for campervan use
		Surveillance & sightlines: see and be seen	2	good passive surveillance from CBD activity and some residential properties on Marine Parade during the day - little surveillance at night
		Layout: clear and logical orientation	3	clear marked carpark with good directional markings
		Activity mix: eyes on the street	3	high activity area from Marine Parade and from Rotary Pathway facilities
		Sense of ownership: showing the space is cared for	3	site is well-maintained, clear signs, surfaces and gardens for way-finding
		Quality environments: well-designed, managed, and maintained	3	site has been designed with management and maintenance in mind
		Physical protection: using active security measures	2	No CCTV, Marine Parade street lighting, carpark and garden lighting
		Sub-Total:	2.6	
2	Services	Water supply	1	water supply available from garden source only
		Lighting	3	low level garden & carpark lighting on-site, Marine Parade street lights
		Dump stations	2	no dump station - closest dump station is nearby at Pump Track/Ellison Street (existing freedom camping site)
		Toilets	2	nearest public toilets at Bay Skate (150m to the south) or I-Site (250m to the north)
		Rubbish bins	2	plenty of public reserve rubbish bins in the vicinity
		Access for large vehicles	1	challenging access, parking and manoeuvring for large vehicles - one way system to enter and exit the site in a forward direction
				Sub-Total:
3	Proximity to Other Activities	Site is not affected by nearby industrial/business activities	3	no industrial/business activities in the vicinity that would impact on freedom camping
		Site has good physical context	3	site has good connection to Marine Parade and direct access to the beach
		Proximity to other services	3	site is central to town amenities, within walking & cycling distance of supermarkets, directly adjacent to Rotary pathway
				Sub-Total:
4	The Site	Exhibits site features that enhance the freedom-camping experience - trees/shade/bollards/signage/surface/markings	3	seating and picnic tables, basketball court, trees for shade, gardens & water features, and clear marking of parks, no obvious signs of vandalism
		Site is not vulnerable to natural hazards	2	adjacent to the coast, not currently at risk from coastal processes or flooding, lies within the 'Sea Spray Zone' on NCC GIS Hazards
		Site has low level of infringements for freedom camping non-compliances (existing sites only)	-	N/A
				Sub-Total:
5	Overall Amenity	Is a suitable location for freedom camping	3	site has good views and access to the beach, and has easy walking/cycling access to attractions e.g. Ocean Spa, National Aquarium, MTC, I-Site, retail and restaurants etc
		Existing function/uses can accommodate freedom camping without compromise	0	high use for business & CBD parking Mon-Fri, and recreational parking - would impact on central city parking capacity (P120)
				Sub-Total:
		TOTAL SCORE (out of a total possible 15):	11.4	
Note:			BaySkate & Marine Parade Playground Carparks have not been assessed. They are considered too small to accommodate campervans, & are high-use supporting major recreational destinations (P120)	

Site 6: Ocean Spa Carpark

Site Location:



Site Photographs:



Site Assessment Sheet:

Site 6: Ocean Spa Carpark		Date:	12 August 2024	
Capacity: 55 x marked carparks				
Assessment Criteria		Score:	Notes:	
1	Safety	Access: safe movement and connections	2	access off Marine Parade, tight internal circulation for campervan use
		Surveillance & sightlines: see and be seen	1	ok passive surveillance from Ocean Spa and from Rotary Pathway recreational use during the day only - no surveillance at night
		Layout: clear and logical orientation	3	clear marked carpark with good directional markings
		Activity mix: eyes on the street	2	some activity from Ocean Spa, War Memorial Centre, Surf Club, Bike hire facilities when operational, and some eyes on the street from recreational users of Rotary Pathway
		Sense of ownership: showing the space is cared for	3	site is well-maintained, clear signs, surfaces and gardens for way-finding
		Quality environments: well-designed, managed, and maintained	3	site has been designed with management and maintenance in mind
		Physical protection: using active security measures	3	CCTV installed, good carpark and garden lighting
	Sub-Total:	2.4		
2	Services	Water supply	2	water supply available from public toilets on neighbouring Coote Road Carpark 1 site
		Lighting	3	carpark lighting on-site
		Dump stations	2	no dump station - closest dump station is nearby at Pump Track/Ellison Street (existing freedom camping site)
		Toilets	3	public toilets immediately adjacent on neighbouring Coote Road Carpark 1 site (to the north)
		Rubbish bins	2	plenty of public reserve rubbish bins in the vicinity
		Access for large vehicles	1	challenging access, parking and manoeuvring for large vehicles
	Sub-Total:	2.2		
3	Proximity to Other Activities	Site is not affected by nearby industrial/business activities	3	Ocean Spa, War Memorial Centre, Surf Club would not impact on the site - other than competition for carparks
		Site has good physical context	3	site has good connection to Marine Parade and direct access to the beach
		Proximity to other services	3	site is central to town amenities, within walking & cycling distance of supermarkets, directly adjacent to Rotary pathway
		Sub-Total:	3.0	
4	The Site	Exhibits site features that enhance the freedom-camping experience - trees/shade/bollards/signage/surface/markings	1	gardens and some park benches
		Site is not vulnerable to natural hazards	2	adjacent to the coast, not currently at risk from coastal processes or flooding, lies within the 'Sea Spray Zone' on NCC GIS Hazards
		Site has low level of infringements for freedom camping non-compliances (existing sites only)	-	N/A
		Sub-Total:	1.5	
5	Overall Amenity	Is a suitable location for freedom camping	3	site has good views and access to the beach, and has easy walking/cycling access to attractions e.g. Ocean Spa, National Aquarium, MTG, I-Site, retail and restaurants etc
		Existing function/uses can accommodate freedom camping without compromise	0	high use for business & CBD parking Mon-Fri, and recreational parking - would impact on central city parking capacity (P180)
		Sub-Total:	1.5	
TOTAL SCORE (out of a total possible 15):		10.6		

Site 7: Coote Road Carpark #1

Site Location:



Site Photographs:



Site Assessment Sheet:

Site 7: Coote Road Carpark 1		Date:	12 August 2024	
Capacity: 63 x marked carparks				
Assessment Criteria		Score:	Notes:	
1	Safety	Access: safe movement and connections	2	multiple access from Marine Parade, tight internal circulation for campervan use
		Surveillance & sightlines: see and be seen	1	some passive surveillance from Marine Parade and from Rotary Pathway recreational use during the day only - no surveillance at night
		Layout: clear and logical orientation	2	clear marked carpark
		Activity mix: eyes on the street	2	some activity from Ocean Spa, Surf Club, Bike hire facilities when operational - otherwise limited eyes on the street from passing vehicles on Marine Parade and recreational users of Rotary Pathway
		Sense of ownership: showing the space is cared for	2	site is reasonably maintained as a public carpark and for Sunday markets
		Quality environments: well-designed, managed, and maintained	2	site has been designed with suitable level of management and maintenance in mind for a public carpark
		Physical protection: using active security measures	0	No CCTV, no lighting, no security features
	Sub-Total:	1.6		
2	Services	Water supply	3	water supply available from public toilets
		Lighting	0	no lighting
		Dump stations	2	no dump station - closest dump station is nearby at Pump Track/Ellison Street (existing freedom camping site)
		Toilets	3	public toilets on-site
		Rubbish bins	2	plenty of public reserve rubbish bins in the vicinity
		Access for large vehicles	2	challenging manoeuvring for large vehicles (large vehicles do currently access this carpark for the Sunday markets)
	Sub-Total:	2.0		
3	Proximity to Other Activities	Site is not affected by nearby industrial/business activities	1	Sunday market occupies entire site every Sunday morning, Ocean Spa, War Memorial Centre, Surf Club could create competition for carparks. Proximity to Port of Napier's Eastern Gate entrance could impact freedom camping in terms of heavy vehicles & 24/7 port operations.
		Site has good physical context	3	site has good connection to Marine Parade and direct access to the beach
		Proximity to other services	3	site is central to town amenities, within walking & cycling distance of supermarkets, directly adjacent to Rotary pathway
		Sub-Total:	2.3	
4	The Site	Exhibits site features that enhance the freedom-camping experience - trees/shade/bollards/signage/surface/markings	2	grass areas, trees for shade, and some park benches
		Site is not vulnerable to natural hazards	2	adjacent to the coast, not currently at risk from coastal processes or flooding, lies within the 'Sea Spray Zone' on NCC GIS Hazards
		Site has low level of infringements for freedom camping non-compliances (existing sites only)	-	N/A
		Sub-Total:	2.0	
5	Overall Amenity	Is a suitable location for freedom camping	3	site has good views and access to the beach, and has easy walking/cycling access to attractions e.g. Ocean Spa, MTG, I-Site, retail and restaurants etc
		Existing function/uses can accommodate freedom camping without compromise	0	high use for business & CBD parking Mon-Fri, and recreational parking - would impact on central city parking capacity; occupied for Sunday Market
		Sub-Total:	1.5	
TOTAL SCORE (out of a total possible 15):		9.4		

Site 8: Coote Road Carpark #2

Site Location:



Site Photographs:

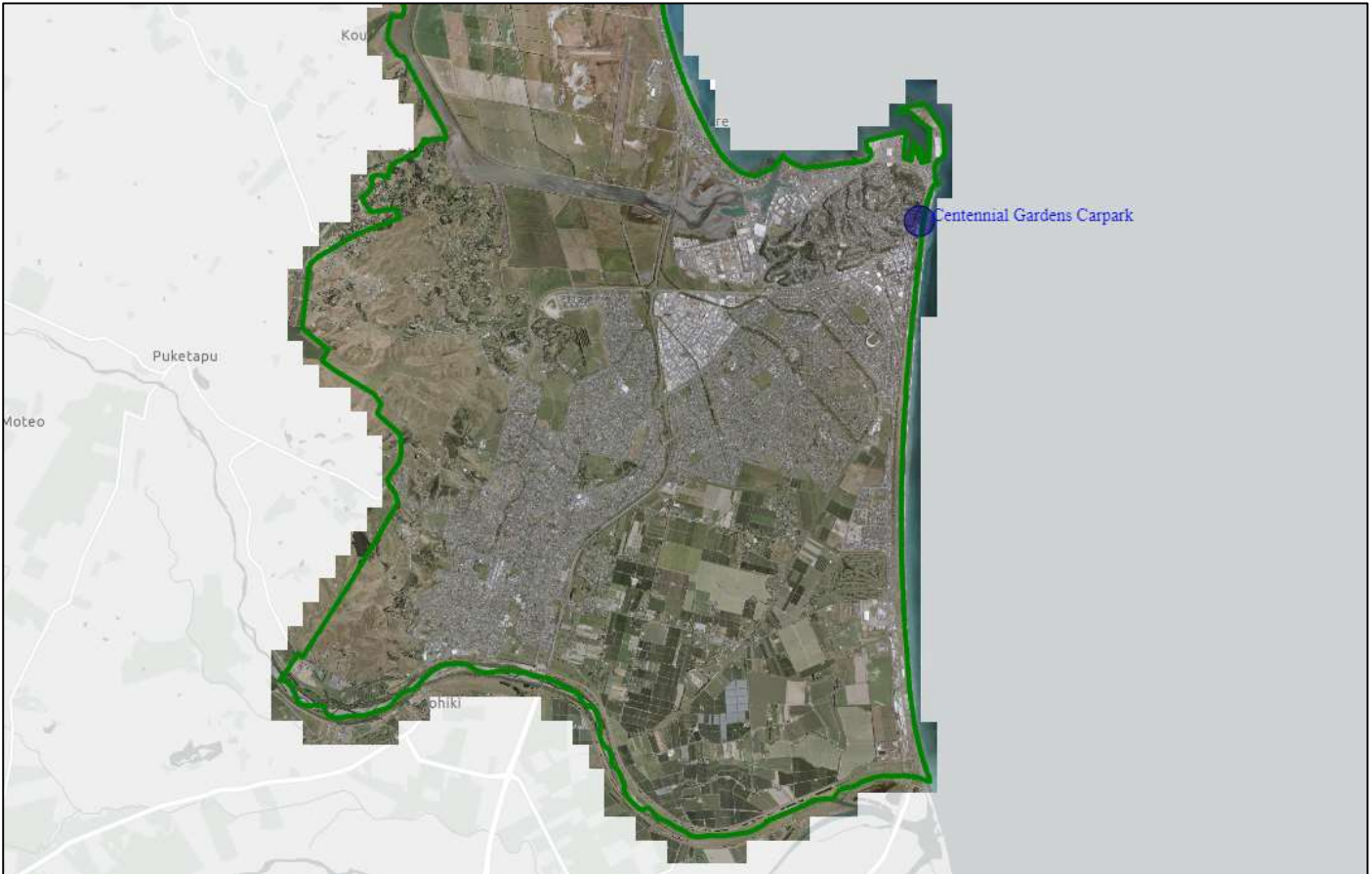


Site Assessment Sheet:

Site 8: Coote Road Carpark 2		Date: 12 August 2024		
Capacity: 18 x marked, extra-long, angle carparks				
Assessment Criteria		Score: Notes:		
1	Safety	Access: safe movement and connections	3	access off Marine Parade, good internal circulation for campervan use
		Surveillance & sightlines: see and be seen	1	some passive surveillance from Marine Parade, the Magnet Café (coffee cart), and from Rotary Pathway recreational use during the day only - no surveillance at night
		Layout: clear and logical orientation	2	clear marked carpark
		Activity mix: eyes on the street	1	limited other activity in the vicinity - some limited eyes on the street from passing vehicles on Marine Parade and recreational users of Rotary Pathway
		Sense of ownership: showing the space is cared for	2	site is reasonably maintained as a public carpark
		Quality environments: well-designed, managed, and maintained	2	site has been designed with suitable level of management and maintenance in mind for a public carpark
		Physical protection: using active security measures	0	No CCTV, no lighting, no security features
		Sub-Total:		1.6
2	Services	Water supply	2	water supply available from public toilets on neighbouring Coote Road Carpark 1 site
		Lighting	0	no lighting
		Dump stations	2	no dump station - closest dump station is nearby at Pump Track/Ellison Street (existing freedom camping site)
		Toilets	2	public toilets on neighbouring Coote Road Carpark 1 site (150m to the south)
		Rubbish bins	2	plenty of public reserve rubbish bins in the vicinity
		Access for large vehicles	3	easy access, parking and manoeuvring for large vehicles to enter and exit the site in a forward direction
Sub-Total:		1.8		
3	Proximity to Other Activities	Site is not affected by nearby industrial/business activities	1	Sunday market occupies entire site every Sunday morning. Proximity to Port of Napier's Eastern Gate entrance could impact freedom camping in terms of heavy vehicles & 24/7 port operations.
		Site has good physical context	3	site has good connection to Marine Parade and direct access to the beach
		Proximity to other services	3	Magnet Café (coffee container) is adjacent to this site on the Rotary pathway, and site is central to town amenities, within walking & cycling distance of supermarkets
Sub-Total:		2.3		
4	The Site	Exhibits site features that enhance the freedom-camping experience - trees/shade/bollards/signage/surface/markings	2	grass areas, trees for shade, and some park benches
		Site is not vulnerable to natural hazards	2	adjacent to the coast, not currently at risk from coastal processes or flooding, lies within the 'Sea Spray Zone' on NCC GIS Hazards
		Site has low level of infringements for freedom camping non-compliances (existing sites only)	-	N/A
Sub-Total:		2.0		
5	Overall Amenity	Is a suitable location for freedom camping	3	site has good views and access to the beach, and has easy walking/cycling access to attractions e.g. Ocean Spa, MTG, I-Site, retail and restaurants etc
		Existing function/uses can accommodate freedom camping without compromise	0	moderate use for business & CBD parking Mon-Fri, and recreational parking - would marginally impact on central city parking capacity; occupied for Sunday Market
Sub-Total:		1.5		
TOTAL SCORE (out of a total possible 15):		9.2		

Site 9: Centennial Gardens Carpark

Site Location:



Site Photographs:



Site Assessment Sheet:

Site 9: Centennial Gardens Carpark		Date: 12 August 2024		
Capacity: 27 x marked carparks				
Assessment Criteria		Score:	Notes:	
1	Safety	Access: safe movement and connections	1	access off Coote Road is challenging, tight internal circulation for campervan use
		Surveillance & sightlines: see and be seen	1	very little surveillance day or night from Coote Road (Cadet Hall next door) or Marine Parade (site is elevated)
		Layout: clear and logical orientation	2	clear marked carpark
		Activity mix: eyes on the street	1	limited other activity in the vicinity, only neighbour is the Cadet Hall, which is used intermittently
		Sense of ownership: showing the space is cared for	2	site is reasonably maintained as a public carpark
		Quality environments: well-designed, managed, and maintained	2	site has been designed with suitable level of management and maintenance in mind for a public carpark
		Physical protection: using active security measures	0	No CCTV, no lighting, no security features
		Sub-Total:	1.3	
2	Services	Water supply	1	water supply from garden source only
		Lighting	0	no lighting
		Dump stations	2	no dump station - closest dump station is nearby at Pump Track/Ellison Street (existing freedom camping site)
		Toilets	1	public toilets on neighbouring Coote Road Carpark 1 site (220m to the south, and across the road)
		Rubbish bins	2	rubbish bins in the vicinity associated with Centennial Gardens
		Access for large vehicles	1	challenging access, parking and manoeuvring for large vehicles to enter and exit the site in a forward direction
		Sub-Total:	1.2	
3	Proximity to Other Activities	Site is not affected by nearby industrial/business activities	2	Proximity to Port of Napier's Eastern Gate entrance could impact freedom camping in terms of heavy vehicles & 24/7 port operations.
		Site has good physical context	2	site has reasonable connection to Marine Parade, but access to the beach and foreshore reserve requires crossing Marine Parade which is busy road
		Proximity to other services	3	site is central to town amenities, within walking & cycling distance of supermarkets, directly adjacent to Rotary pathway
		Sub-Total:	2.3	
4	The Site	Exhibits site features that enhance the freedom-camping experience - trees/shade/bollards/signage/surface/markings	1	trees and gardens, no other facilities
		Site is not vulnerable to natural hazards	2	adjacent to the coast, not currently at risk from coastal processes or flooding, lies within the 'Sea Spray Zone' on NCC GIS Hazards
		Site has low level of infringements for freedom camping non-compliances (existing sites only)	-	N/A
		Sub-Total:	1.5	
5	Overall Amenity	Is a suitable location for freedom camping	2	site has good views, access to the beach across Marine Parade, and has easy walking/cycling access to attractions e.g. Ocean Spa, MTG, I-Site, retail and restaurants etc
		Existing function/uses can accommodate freedom camping without compromise	2	Intermittent use for Cadet Hall and Centennial Gardens parking - unlikely to impact on central city parking capacity
		Sub-Total:	2.0	
		TOTAL SCORE (out of a total possible 15):	8.3	

Site 10: Hot Chick Carpark

Site Location:



Site Photographs:

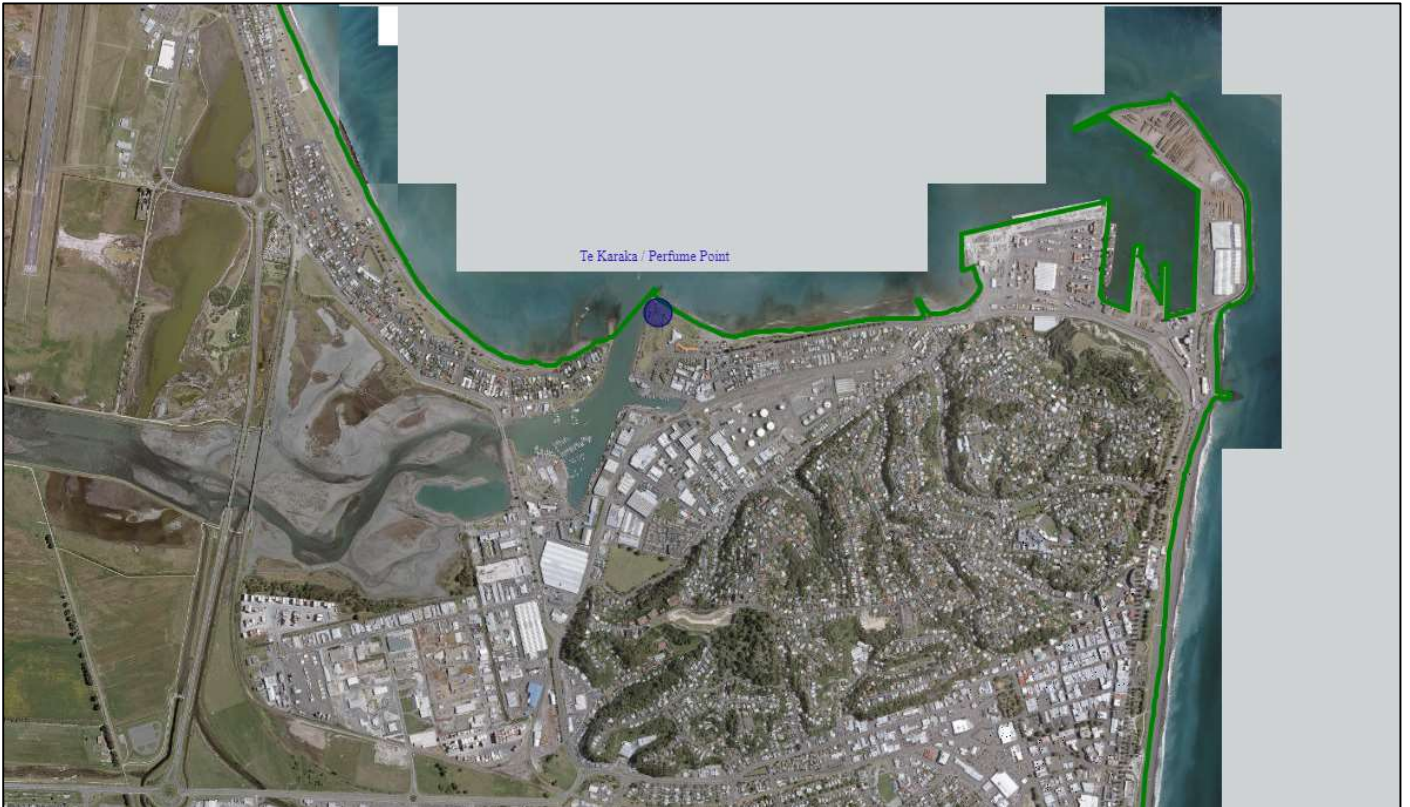


Site Assessment Sheet:

Site 10: Hot Chick Carpark		Date:	19 August 2024	
Capacity:		91 x marked carparks		
Assessment Criteria		Score:	Notes:	
1	Safety	Access: safe movement and connections	2	reasonable access off Hardinge Road, tight internal circulation for campervan use
		Surveillance & sightlines: see and be seen	3	good passive surveillance from adjacent residents, motels and retail area, and from Rotary Pathway recreational use
		Layout: clear and logical orientation	3	clear marked carpark with good directional markings
		Activity mix: eyes on the street	3	high activity area from Ahuriri village, Spriggs Park recreational area and from Rotary Pathway facilities
		Sense of ownership: showing the space is cared for	3	site is well-maintained, clear signs, surfaces and gardens for way-finding
		Quality environments: well-designed, managed, and maintained	3	site has been designed with management and maintenance in mind
		Physical protection: using active security measures	3	CCTV installed, good carpark lighting
		Sub-Total:	2.9	
2	Services	Water supply	3	water supply available - on-site and nearby at Spriggs Park
		Lighting	3	carpark lighting on-site
		Dump stations	2	no dump station - closest dump station is nearby at Domain Road (Westshore)
		Toilets	3	public toilets immediately adjacent in neighbouring Spriggs Park (50m to the south)
		Rubbish bins	2	plenty of public reserve rubbish bins in the vicinity
		Access for large vehicles	3	good access, parking and manoeuvring for large vehicles
		Sub-Total:	2.7	
3	Proximity to Other Activities	Site is not affected by nearby industrial/business activities	3	surrounding activities unlikely to impact on the site - other than competition for carparks
		Site has good physical context	2	site has good connection to Hardinge Road which readily connects to the Ahuriri bypass, and direct access to the beach
		Proximity to other services	3	site is central to village amenities, within walking & cycling distance of superette, directly adjacent to Rotary pathway
		Sub-Total:	2.7	
4	The Site	Exhibits site features that enhance the freedom-camping experience - trees/shade/bollards/signage/surface/markings	2	gardens, park benches, with shade, bbq, picnic tables and playground nearby
		Site is not vulnerable to natural hazards	2	adjacent to the coast, not currently at risk from coastal processes or flooding, lies within the 'Sea Spray Zone' on NCC GIS Hazards (NCC GIS indicates potential/actual contaminated site)
		Site has low level of infringements for freedom camping non-compliances (existing sites only)	-	N/A
		Sub-Total:	2.0	
5	Overall Amenity	Is a suitable location for freedom camping	3	site has good views and access to the beach, and has easy walking/cycling access to attractions e.g. Ahuriri village, Spriggs Park, West Quay hospitality precinct, inner harbour etc
		Existing function/uses can accommodate freedom camping without compromise	0	high use for business & Ahuriri village parking Mon-Fri, and recreational parking - would impact on village parking capacity (Public parking - no charge)
		Sub-Total:	1.5	
		TOTAL SCORE (out of a total possible 15):	11.7	

Site 11: Te Karaka / Perfume Point Carpark (existing)

Site Location:



Site Photographs:

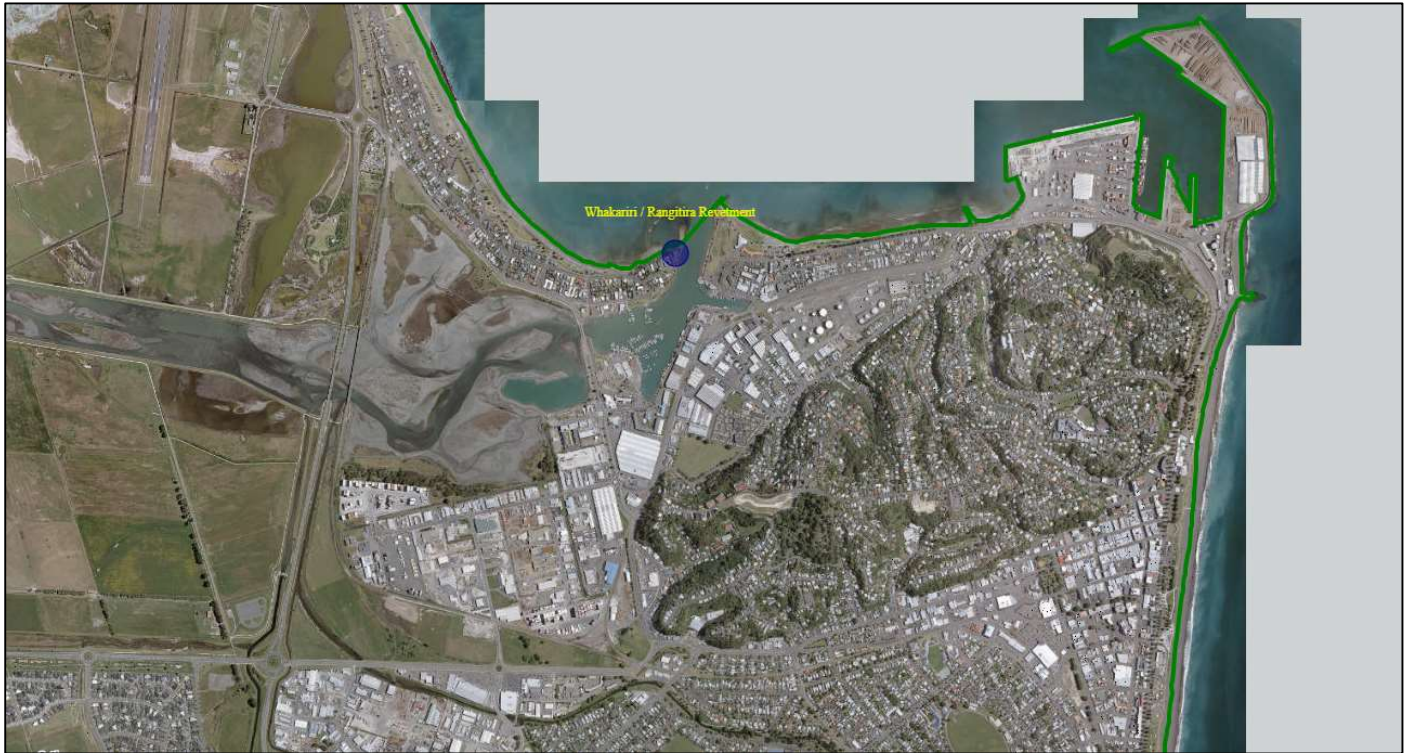


Site Assessment Sheet:

Site 11: Te Karaka/Perfume Point Carpark (existing)		Date:	12 August 2024	
Capacity:		4 x freedom camping parks, and 39 x marked carparks		
Assessment Criteria		Score:	Notes:	
1	Safety	Access: safe movement and connections	3	good access off Hardinge Road, good internal circulation for campervan use
		Surveillance & sightlines: see and be seen	3	good passive surveillance from residential properties on Hardinge Road & East Pier Hotel, and from Rotary Pathway users
		Layout: clear and logical orientation	3	specific laid out for freedom camping
		Activity mix: eyes on the street	1	some activity from East Pier Hotel - otherwise limited eyes on the street from recreational users of Rotary Pathway
		Sense of ownership: showing the space is cared for	3	site is well-maintained, clear signs, surfaces and gardens for way-finding
		Quality environments: well-designed, managed, and maintained	3	site has been designed with management and maintenance in mind
		Physical protection: using active security measures	3	CCTV installed
		Sub-Total:	2.7	
2	Services	Water supply	3	water supply available from public toilet on-site
		Lighting	3	lighting associated with public toilet and carpark lighting on-site
		Dump stations	2	no dump station - closest dump station is nearby at Domain Road (Westshore)
		Toilets	3	public toilets on-site
		Rubbish bins	2	plenty of public reserve rubbish bins in the vicinity
		Access for large vehicles	3	easy access, parking and manoeuvring for large vehicles to enter and exit the site in a forward direction
		Sub-Total:	2.7	
3	Proximity to Other Activities	Site is not affected by nearby industrial/business activities	3	surrounding activities unlikely to impact on the site
		Site has good physical context	2	site has good connection to Hardinge Road which readily connects to the Ahuriri bypass, and direct access to the beach
		Proximity to other services	3	site is central to village amenities, within walking & cycling distance of superette, directly adjacent to Rotary pathway
		Sub-Total:	2.7	
4	The Site	Exhibits site features that enhance the freedom-camping experience - trees/shade/bollards/signage/surface/markings	2	gardens, park benches, with shade, bbq, picnic tables and playground nearby
		Site is not vulnerable to natural hazards	2	adjacent to the coast, not currently at risk from coastal processes or flooding, lies within the 'Sea Spray Zone' on NCC GIS Hazards
		Site has low level of infringements for freedom camping non-compliances (existing sites only)	1	proportionally high number of infringements for the number of users (% of infringements to users across 2018-2024 = 5.6% - Note: infringements have substantially dropped following increase in fine since June 2023); low number of recorded public complaints (6 since 2018)
		Sub-Total:	1.7	
5	Overall Amenity	Is a suitable location for freedom camping	3	site has good views and access to the beach, and has easy walking/cycling access to attractions e.g. Ahuriri village, Spriggs Park, West Quay hospitality precinct, inner harbour etc
		Existing function/uses can accommodate freedom camping without compromise	2	also serves as recreation reserve carparking, but no other activities on-site
		Sub-Total:	2.5	
		TOTAL SCORE (out of a total possible 15):	12.2	

Site 12: Whakarire / Rangitira Revetment Carpark

Site Location:



Site Photographs:



Site Assessment Sheet:

Site 12: Whakarire/Rangatira Revetment Carpark		Date:	12 August 2024	
Capacity:		NIL		
Assessment Criteria		Score:	Notes:	
1	Safety	Access: safe movement and connections	1	access from Whakarire Avenue, small site with difficult internal circulation (bollards in place)
		Surveillance & sightlines: see and be seen	1	limited passive surveillance (immediately adjacent residential property but otherwise somewhat secluded)
		Layout: clear and logical orientation	1	unmarked gravel carpark
		Activity mix: eyes on the street	1	limited other activity in the vicinity - eyes on the street are almost exclusively from pathway users and surfing community
		Sense of ownership: showing the space is cared for	0	carpark area is unmarked and unkempt
		Quality environments: well-designed, managed, and maintained	0	not designed for freedom camping purposes
		Physical protection: using active security measures	0	no CCTV or other security features/elements
		Sub-Total:	0.6	
2	Services	Water supply	0	no water supply
		Lighting	0	no lighting
		Dump stations	2	no dump station - closest dump station is nearby at Domain Road
		Toilets	0	no public toilets (1.2km to nearest)
		Rubbish bins	1	standard reserve rubbish bin on-site
		Access for large vehicles	1	challenging parking and manoeuvring for large vehicles
		Sub-Total:	0.7	
3	Proximity to Other Activities	Site is not affected by nearby industrial/business activities	3	no industrial/business activities in the vicinity
		Site has good physical context	2	site has indirect connection to SH2, and direct access to the beach
		Proximity to other services	1	site is on outskirts of town, directly adjacent to Rotary pathway - not within walking distance of supermarkets etc
				Sub-Total:
4	The Site	Exhibits site features that enhance the freedom-camping experience - trees/shade/bollards/signage/surface/markings	0	no features, and generally low on-site amenity
		Site is not vulnerable to natural hazards	2	adjacent to the coast, lies within the 'Sea Spray Zone' and 'Coastal Hazard Zone' on NCC GIS Hazards (Note: installation of revetment to address coastal hazard)
		Site has low level of infringements for freedom camping non-compliances (existing sites only)	-	N/A
				Sub-Total:
5	Overall Amenity	Is a suitable location for freedom camping	2	site has good views and access to the beach
		Is a single purpose site (i.e. is not simultaneously supporting other business/recreational/other activities)	2	also serves as surfing/fishing carpark, but no other activities on-site
				Sub-Total:
		TOTAL SCORE (out of a total possible 15):	6.2	

Site 13: Westshore Beach Reserve

Site Location:



Site Photographs:



Site Assessment Sheet:

Site 13: Westshore Beach Reserve			Date:	12 August 2024
Capacity: Nil				
Assessment Criteria			Score:	Notes:
1	Safety	Access: safe movement and connections	2	access is off Ferguson Avenue, constrained internal circulation (small site area)
		Surveillance & sightlines: see and be seen	2	passive surveillance from Westshore School and residential properties
		Layout: clear and logical orientation	1	unmarked gravel carpark
		Activity mix: eyes on the street	1	limited other activity in the vicinity - eyes on the street are almost exclusively from passing vehicles, and some recreational users on the Rotary pathway
		Sense of ownership: showing the space is cared for	0	carpark area is unmarked and unkempt
		Quality environments: well-designed, managed, and maintained	0	not designed for freedom camping purposes
		Physical protection: using active security measures	0	no CCTV or other security features/elements
		Sub-Total:	0.9	
2	Services	Water supply	0	no water supply
		Lighting	0	no lighting
		Dump stations	2	no dump station - closest dump station is nearby at Domain Road
		Toilets	1	public toilets on neighbouring Westshore Reserve Playground (220m to the north)
		Rubbish bins	1	standard reserve rubbish bin on-site
		Access for large vehicles	1	challenging parking and manoeuvring for large vehicles
				Sub-Total:
3	Proximity to Other Activities	Site is not affected by nearby industrial/business activities	3	Westshore School opposite - not likely to impact on freedom camping
		Site has good physical context	2	site has indirect connection to SH2, and direct access to the beach
		Proximity to other services	1	site is on outskirts of town, directly adjacent to Rotary pathway - not within walking distance of supermarkets etc
			Sub-Total:	2.0
4	The Site	Exhibits site features that enhance the freedom-camping experience - trees/shade/bollards/signage/surface/markings	0	no features, and generally low on-site amenity
		Site is not vulnerable to natural hazards	2	adjacent to the coast, not currently at risk from coastal processes or flooding, lies within the 'Sea Spray Zone' & 'Coastal Hazard Zone' on NCC GIS Hazards (Note: gravel bund mitigation)
		Site has low level of infringements for freedom camping non-compliances (existing sites only)	-	N/A
			Sub-Total:	1.0
5	Overall Amenity	Is a suitable location for freedom camping	1	site has no views but good access to the beach
		Existing function/uses can accommodate freedom camping without compromise	2	also serves as reserve carparking, but no other activities on-site
			Sub-Total:	1.5
TOTAL SCORE (out of a total possible 15):			6.2	

Site 14: Westshore Reserve – Surf Club

Site Location:



Site Photographs:

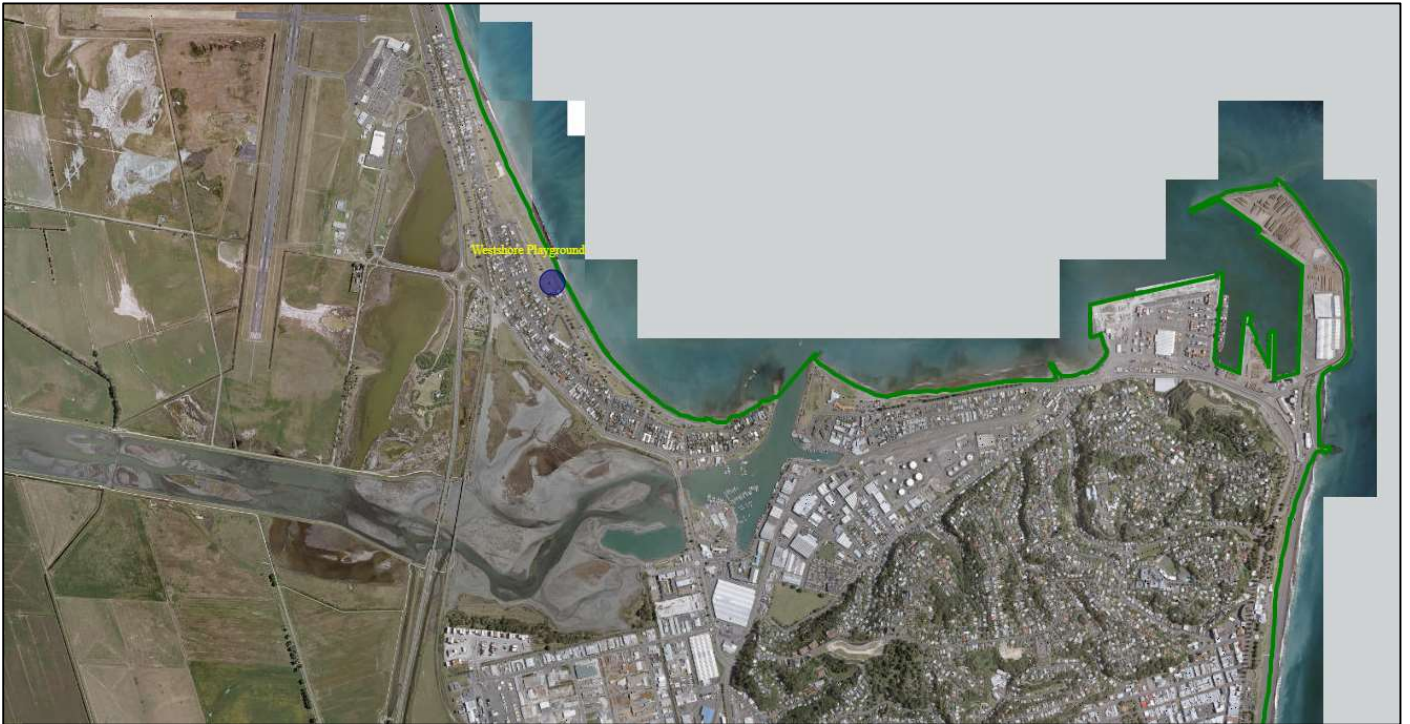


Site Assessment Sheet:

Site 14: Westshore Reserve - Surf Club			Date:	12 August 2024
Capacity: Nil				
Assessment Criteria			Score:	Notes:
1	Safety	Access: safe movement and connections	2	access is off Ferguson Avenue, reasonable internal circulation (small site area)
		Surveillance & sightlines: see and be seen	2	passive surveillance from residential properties on Ferguson Avenue, and recreational users
		Layout: clear and logical orientation	1	unmarked, partially gravelled carpark
		Activity mix: eyes on the street	1	limited other activity in the vicinity - eyes on the street are almost exclusively from Westshore Surf Club, passing vehicles, and some recreational users on the Rotary pathway (Note: sits slightly below street level)
		Sense of ownership: showing the space is cared for	0	carpark area is unmarked and unkempt
		Quality environments: well-designed, managed, and maintained	0	not designed for freedom camping purposes
		Physical protection: using active security measures	0	no CCTV or other security features/elements
Sub-Total:			0.9	
2	Services	Water supply	3	water supply available from public toilet and tap on adjacent site
		Lighting	0	no lighting
		Dump stations	2	no dump station - closest dump station is nearby at Domain Road
		Toilets	3	public toilets adjacent at Westshore Reserve Playground
		Rubbish bins	2	standard reserve rubbish bins on-site
		Access for large vehicles	2	suitable parking and manoeuvring for large vehicles
Sub-Total:			2.0	
3	Proximity to Other Activities	Site is not affected by nearby industrial/business activities	2	Westshore Surf Club adjacent - activity could impact parking availability
		Site has good physical context	2	site has indirect connection to SH2, and direct access to the beach
		Proximity to other services	1	site is on outskirts of town, directly adjacent to Rotary pathway - not within walking distance of supermarkets etc
Sub-Total:			1.7	
4	The Site	Exhibits site features that enhance the freedom-camping experience - trees/shade/bollards/signage/surface/markings	2	some gardens and trees, no other amenity features on-site, and playground nearby
		Site is not vulnerable to natural hazards	2	adjacent to the coast, not currently at risk from coastal processes or flooding, lies within the 'Sea Spray Zone' & 'Coastal Hazard Zone' on NCC GIS Hazards (Note: gravel bund mitigation)
		Site has low level of infringements for freedom camping non-compliances (existing sites only)	-	N/A
Sub-Total:			2.0	
5	Overall Amenity	Is a suitable location for freedom camping	1	site has no views but good access to the beach
		Existing function/uses can accommodate freedom camping without compromise	2	also serves as surf club and reserve carparking
Sub-Total:			1.5	
TOTAL SCORE (out of a total possible 15):			8.0	

Site 15: Westshore Reserve – Playground

Site Location:



Site Photographs:

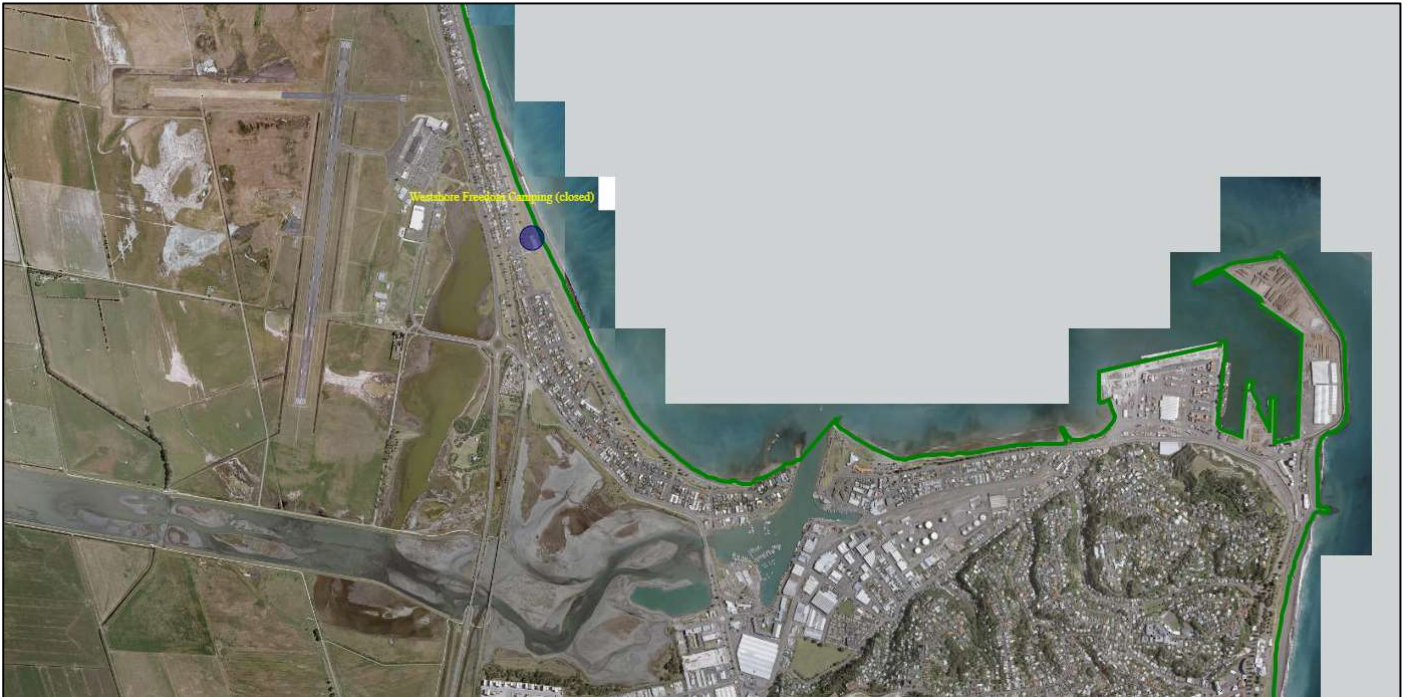


Site Assessment Sheet:

Site 15: Westshore Reserve - Playground			Date:	12 August 2024
Capacity:			Nil	
Assessment Criteria			Score:	Notes:
1	Safety	Access: safe movement and connections	3	access is off Ferguson Avenue, good internal circulation (large site area)
		Surveillance & sightlines: see and be seen	2	passive surveillance from residential properties on Ferguson Avenue, and recreational users
		Layout: clear and logical orientation	1	unmarked, predominantly gravelled carpark
		Activity mix: eyes on the street	2	limited other activity in the vicinity - eyes on the street are almost exclusively from Westshore Surf Club, passing vehicles, and playground and recreational users on the Rotary pathway
		Sense of ownership: showing the space is cared for	0	carpark area is unmarked and unkempt
		Quality environments: well-designed, managed, and maintained	0	not designed for freedom camping purposes
		Physical protection: using active security measures	0	no CCTV or other security features/elements
Sub-Total:			1.1	
2	Services	Water supply	3	water supply available from public toilet and tap on adjacent site
		Lighting	0	no lighting
		Dump stations	2	no dump station - closest dump station is nearby at Domain Road
		Toilets	3	public toilets on-site
		Rubbish bins	2	standard reserve rubbish bins on-site
		Access for large vehicles	2	suitable parking and manoeuvring for large vehicles
Sub-Total:			2.0	
3	Proximity to Other Activities	Site is not affected by nearby industrial/business activities	2	Westshore Surf Club adjacent - activity could impact parking availability
		Site has good physical context	2	site has indirect connection to SH2, and direct access to the beach
		Proximity to other services	1	site is on outskirts of town, directly adjacent to Rotary pathway - not within walking distance of supermarkets etc
		Sub-Total:		
4	The Site	Exhibits site features that enhance the freedom-camping experience - trees/shade/bollards/signage/surface/markings	2	some gardens and trees, no other amenity features on-site, and playground nearby
		Site is not vulnerable to natural hazards	2	adjacent to the coast, not currently at risk from coastal processes or flooding, lies within the 'Sea Spray Zone' & 'Coastal Hazard Zone' on NCC GIS Hazards (Note: gravel bund mitigation)
		Site has low level of infringements for freedom camping non-compliances (existing sites only)	-	N/A
		Sub-Total:		
5	Overall Amenity	Is a suitable location for freedom camping	2	site has good views and access to the beach
		Existing function/uses can accommodate freedom camping without compromise	2	also serves as surf club and reserve carparking
		Sub-Total:		
TOTAL SCORE (out of a total possible 15):			8.8	

Site 16: Westshore Reserve – existing (temporarily closed)

Site Location:



Site Photographs:



Site Assessment Sheet:

Site 16: Westshore Reserve - existing (temp closed)		Date:	12 August 2024	
Capacity: 4 x marked freedom camping parks (potential for more)				
Assessment Criteria		Score:	Notes:	
1	Safety	Access: safe movement and connections	3	access is off The Esplanade, good internal circulation
		Surveillance & sightlines: see and be seen	2	passive surveillance from residential properties on The Esplanade, and recreational users
		Layout: clear and logical orientation	3	specifically laid out for freedom camping
		Activity mix: eyes on the street	1	limited other activity in the vicinity - eyes on the street are almost exclusively from passing vehicles, and some recreational users on the Rotary pathway
		Sense of ownership: showing the space is cared for	1	site is showing signs of neglect (Note: has been closed to freedom camping since September 2021)
		Quality environments: well-designed, managed, and maintained	3	site has been designed with management and maintenance in mind
		Physical protection: using active security measures	0	no CCTV or other security features/elements
	Sub-Total:	1.9		
2	Services	Water supply	0	no water supply
		Lighting	0	no lighting
		Dump stations	2	no dump station - closest dump station is nearby at Domain Road
		Toilets	3	public toilets immediately nearby (100m to the north)
		Rubbish bins	1	standard reserve rubbish bin on-site
		Access for large vehicles	3	easy access, parking and manoeuvring for large vehicles to enter and exit the site in a forward direction
	Sub-Total:	1.5		
3	Proximity to Other Activities	Site is not affected by nearby industrial/business activities	3	surrounding activities unlikely to impact on the site
		Site has good physical context	2	site has indirect connection to SH2, and direct access to the beach
		Proximity to other services	1	site is on outskirts of town, directly adjacent to Rotary pathway - not within walking distance of supermarkets etc
		Sub-Total:	2.0	
4	The Site	Exhibits site features that enhance the freedom-camping experience - trees/shade/bollards/signage/surface/markings	1	picnic table, otherwise generally low on-site amenity
		Site is not vulnerable to natural hazards	2	adjacent to the coast, not currently at risk from coastal processes or flooding, lies within the 'Sea Spray Zone' & 'Coastal Hazard Zone' on NCC GIS Hazards (Note: gravel bund mitigation)
		Site has low level of infringements for freedom camping non-compliances (existing sites only)	1	proportionally high number of infringements for the number of users (% of infringements to users across 2018-2024 = 5.4% - Note: includes infringements post-closure)
		Sub-Total:	1.3	
5	Overall Amenity	Is a suitable location for freedom camping	2	site has good views and access to the beach
		Existing function/uses can accommodate freedom camping without compromise	2	also serves as reserve carparking, but no other activities on-site
		Sub-Total:	2.0	
TOTAL SCORE (out of a total possible 15):		8.7		

Site 17: Le Quesne Road #1

Site Location:



Site Photographs:



Site Assessment Sheet:

Site 17: Le Quesne Road 1		Date:	19 August 2024	
Capacity:	Nil			
Assessment Criteria		Score:	Notes:	
1	Safety	Access: safe movement and connections	3	access is from Le Quesne/Franklin Road, safe internal circulation (large site area)
		Surveillance & sightlines: see and be seen	0	minimal passive surveillance (closest residential properties separated by railway line, or at distance on oblique angle and screened by vegetation)
		Layout: clear and logical orientation	1	unmarked gravel carpark
		Activity mix: eyes on the street	1	limited other activity in the vicinity - eyes on the street are exclusively from passing vehicles on Le Quesne Road (low traffic numbers), and some recreational users
		Sense of ownership: showing the space is cared for	0	carpark area is unmarked and unkempt
		Quality environments: well-designed, managed, and maintained	0	not designed for freedom camping purposes
		Physical protection: using active security measures	0	no CCTV or other security features/elements
	Sub-Total:	0.7		
2	Services	Water supply	0	no water supply
		Lighting	0	no lighting
		Dump stations	1	no dump station - closest dump station is 8km to the south at Domain Road in Napier
		Toilets	0	no public toilets (1km to the north at Le Quesne Road 2)
		Rubbish bins	1	standard reserve rubbish bin on-site
		Access for large vehicles	3	easy access, parking and manoeuvring for large vehicles to enter and exit the site in a forward direction
	Sub-Total:	0.8		
3	Proximity to Other Activities	Site is not affected by nearby industrial/business activities	3	surrounding activities unlikely to impact on the site
		Site has good physical context	2	site has indirect connection to SH2 and direct access to the beach
		Proximity to other services	0	site is remote from services
		Sub-Total:	1.7	
4	The Site	Exhibits site features that enhance the freedom-camping experience - trees/shade/bollards/signage/surface/markings	1	picnic table, otherwise generally low on-site amenity
		Site is not vulnerable to natural hazards	1	adjacent to the coast, not currently at risk from coastal processes or flooding, lies within the 'Sea Spray Zone' & 'Coastal Hazard Zone' on NCC GIS Hazards
		Site has low level of infringements for freedom camping non-compliances (existing sites only)	-	N/A
		Sub-Total:	1.0	
5	Overall Amenity	Is a suitable location for freedom camping	2	site has good views and access to the beach
		Existing function/uses can accommodate freedom camping without compromise	3	no other activities on-site
		Sub-Total:	2.5	
TOTAL SCORE (out of a total possible 15):		6.7		

Site 18: Le Quesne Road #2

Site Location:



Site Photographs:



Site Assessment Sheet:

Site 18: Le Quesne Road 2		Date: 19 August 2024		
Capacity:	Nil			
Assessment Criteria		Score:	Notes:	
1	Safety	Access: safe movement and connections	3	access is from Le Quesne Road, safe internal circulation (large site area)
		Surveillance & sightlines: see and be seen	3	good passive surveillance from residential properties directly opposite site on Le Quesne Road
		Layout: clear and logical orientation	1	unmarked gravel carpark
		Activity mix: eyes on the street	1	limited other activity in the vicinity - eyes on the street are exclusively from passing vehicles on Le Quesne Road (low traffic numbers), and some recreational users
		Sense of ownership: showing the space is cared for	1	carpark area is unmarked
		Quality environments: well-designed, managed, and maintained	0	not designed for freedom camping purposes
		Physical protection: using active security measures	0	no CCTV or other security features/elements
	Sub-Total:	1.3		
2	Services	Water supply	3	water supply available from public toilet
		Lighting	1	lighting associated with public toilet on-site
		Dump stations	1	no dump station - closest dump station is 9km to the south at Domain Road in Napier
		Toilets	3	public toilets on-site
		Rubbish bins	1	standard reserve rubbish bin on-site
		Access for large vehicles	3	easy access, parking and manoeuvring for large vehicles to enter and exit the site in a forward direction
	Sub-Total:	2.0		
3	Proximity to Other Activities	Site is not affected by nearby industrial/business activities	3	surrounding activities unlikely to impact on the site
		Site has good physical context - connects to main roads, adjacent to coastal etc	2	site has indirect connection to SH2 and direct access to the beach
		Proximity to other services	0	site is remote from services
		Sub-Total:	1.7	
4	The Site	Exhibits site features that enhance the freedom-camping experience - trees/shade/bollards/signage/surface/markings	1	picnic table on adjacent site, otherwise generally low on-site amenity
		Site is not vulnerable to natural hazards	1	adjacent to the coast, not currently at risk from coastal processes or flooding, lies within the 'Sea Spray Zone' & 'Coastal Hazard Zone' on NCC GIS Hazards
		Site has low level of infringements for freedom camping non-compliances (existing sites only)	-	N/A
		Sub-Total:	1.0	
5	Overall Amenity	Is a suitable location for freedom camping	2	site has good views and access to the beach
		Existing function/uses can accommodate freedom camping without compromise	3	no other activities on-site
		Sub-Total:	2.5	
TOTAL SCORE (out of a total possible 15):		8.5		

Appendix E – NCC Freedom Camping Infringement Statistics

Freedom Camping Site Location	Infringements (1 July - 30 June)
	2018-19
Pump Track	132
Te Karaka/Perfume Point	40
Foreshore Reserve	203
Westshore	56
	2019-20
Pump Track	203
Te Karaka/Perfume Point	95
Foreshore Reserve	257
Westshore	61
	2020-21
Pump Track	79
Te Karaka/Perfume Point	58
Foreshore Reserve	69
Westshore	25
	2021-22
Pump Track	91
Te Karaka/Perfume Point	50
Foreshore Reserve	69
Westshore	22
	2022-23
Pump Track	97
Te Karaka/Perfume Point	116
Foreshore Reserve	96
Westshore	24
	2023-24
Pump Track	63
Te Karaka/Perfume Point	113
Foreshore Reserve	46
Westshore	6